

Return of Organization Exempt From Income Tax

2012

Department of the Treasury
Internal Revenue Service

Under section 501(c), 527, or 4947(a)(1) of the Internal Revenue Code
(except black lung benefit trust or private foundation)

Open to Public Inspection

The organization may have to use a copy of this return to satisfy state reporting requirements.

A For the 2012 calendar year, or tax year beginning , 2012, and ending

B Check if applicable: <input type="checkbox"/> Address change <input type="checkbox"/> Name change <input type="checkbox"/> Initial return <input type="checkbox"/> Terminated <input type="checkbox"/> Amended return <input type="checkbox"/> Application pending	C Name of organization Northwest Montana Human Resources, Inc.		D Employer Identification Number 81-0366018
	Doing Business As Community Action Partnership of Northwest Montana		E Telephone number (406) 752-6565
	Number and street (or P.O. box if mail is not delivered to street addr) Room/suite P.O. Box 8300		G Gross receipts \$ 7,483,137.
City, town or country State ZIP code + 4 Kalispell MT 59904-1300		H(a) Is this a group return for affiliates? <input type="checkbox"/> Yes <input checked="" type="checkbox"/> No	
F Name and address of principal officer: Douglas D. Rauthe P.O. Box 8300 Kalispell MT 59904-1300		H(b) Are all affiliates included? If 'No,' attach a list. (see instructions) <input type="checkbox"/> Yes <input type="checkbox"/> No	

I Tax-exempt status <input checked="" type="checkbox"/> 501(c)(3) <input type="checkbox"/> 501(c) () (insert no.) <input type="checkbox"/> 4947(a)(1) or <input type="checkbox"/> 527	J Website: www.capnm.net	H(c) Group exemption number
---	--	------------------------------------

K Form of organization: <input checked="" type="checkbox"/> Corporation <input type="checkbox"/> Trust <input type="checkbox"/> Association <input type="checkbox"/> Other	L Year of Formation: 1976	M State of legal domicile: MT
---	---	---

Part I Summary

Activities & Governance	1 Briefly describe the organization's mission or most significant activities: <u>The mission of Northwest Montana Human Resources, Inc. dba Community Action Partnership of Northwest Montana is to provide services and advocacy to improve lives and strengthen our communities. Our service area encompasses the four counties of northwest Montana. Assisting people to find their way out of poverty is our utmost goal.</u>		
	2 Check this box <input type="checkbox"/> if the organization discontinued its operations or disposed of more than 25% of its net assets.		
	3 Number of voting members of the governing body (Part VI, line 1a)	3	12
	4 Number of independent voting members of the governing body (Part VI, line 1b)	4	12
	5 Total number of individuals employed in calendar year 2012 (Part V, line 2a)	5	226
	6 Total number of volunteers (estimate if necessary)	6	214
	7a Total unrelated business revenue from Part VIII, column (C), line 12	7a	16,824.
b Net unrelated business taxable income from Form 990-T, line 34	7b	0.	
Revenue	8 Contributions and grants (Part VIII, line 1h)	Prior Year	Current Year
	9 Program service revenue (Part VIII, line 2g)	5,600,556.	4,287,363.
	10 Investment income (Part VIII, column (A), lines 3, 4, and 7d)	3,036,178.	1,791,142.
	11 Other revenue (Part VIII, column (A), lines 5, 6d, 8c, 9c, 10c, and 11e)	28,361.	27,091.
	12 Total revenue - add lines 8 through 11 (must equal Part VIII, column (A), line 12)	28,251.	321,048.
Expenses	13 Grants and similar amounts paid (Part IX, column (A), lines 1-3)	8,693,346.	6,426,644.
	14 Benefits paid to or for members (Part IX, column (A), line 4)	43,071.	37,699.
	15 Salaries, other compensation, employee benefits (Part IX, column (A), lines 5-10)	3,865,707.	2,988,327.
	16a Professional fundraising fees (Part IX, column (A), line 11e)		
	b Total fundraising expenses (Part IX, column (D), line 25) ▶ 0.		
	17 Other expenses (Part IX, column (A), lines 11a-11d, 11f-24e)	3,573,047.	2,887,871.
	18 Total expenses. Add lines 13-17 (must equal Part IX, column (A), line 25)	7,481,825.	5,913,897.
19 Revenue less expenses. Subtract line 18 from line 12	1,211,521.	512,747.	
Net Assets or Fund Balances	20 Total assets (Part X, line 16)	Beginning of Current Year	End of Year
	21 Total liabilities (Part X, line 26)	6,804,314.	7,735,647.
	22 Net assets or fund balances. Subtract line 21 from line 20	2,781,551.	3,200,137.

Part II Signature Block

Under penalties of perjury, I declare that I have examined this return, including accompanying schedules and statements, and to the best of my knowledge and belief, it is true, correct, and complete. Declaration of preparer (other than officer) is based on all information of which preparer has any knowledge.

Sign Here	Signature of officer _____	Date _____			
	Type or print name and title. _____				
Paid Preparer Use Only	Print/type preparer's name LOREN W RANDALL, CPA	Preparer's signature _____	Date _____	Check <input type="checkbox"/> if self-employed	PTIN P00237699
	Firm's name ▶ CPR ACCOUNTING PLLP			Firm's EIN ▶ 81-0544696	
	Firm's address ▶ PO BOX 4325			Phone no. (406) 728-5539	
	MISSOULA MT 59806				

May the IRS discuss this return with the preparer shown above? (see instructions) Yes No

Part III Statement of Program Service Accomplishments

Check if Schedule O contains a response to any question in this Part III [X]

1 Briefly describe the organization's mission:

The mission of Northwest Montana Human Resources, Inc. dba Community Action Partnership of Northwest Montana is to provide services and See Form 990, Page 2, Part III, Line 1 (continued)

2 Did the organization undertake any significant program services during the year which were not listed on the prior Form 990 or 990-EZ? [] Yes [X] No If 'Yes,' describe these new services on Schedule O.

3 Did the organization cease conducting, or make significant changes in how it conducts, any program services? [] Yes [X] No If 'Yes,' describe these changes on Schedule O.

4 Describe the organization's program service accomplishments for each of its three largest program services, as measured by expenses. Section 501(c)(3) and 501(c)(4) organizations and section 4947(a)(1) trusts are required to report the amount of grants and allocations to others, the total expenses, and revenue, if any, for each program service reported.

4a (Code:) (Expenses \$ 1,931,833. including grants of \$ 0.) (Revenue \$ 474,568.) Energy Department provides the following services: LIEAP (Low Income Energy Assistance Program) provided energy assistance to 4,447 families by paying part of their winter heating bills. Energy Share assisted 505 families with emergency heating needs caused by situations beyond the family's control. Weatherization assisted 343 households in reducing high energy costs by installing insulation, improving furnace efficiency or replacing furnaces if necessary and reducing air infiltration. It also has an extensive Client Education Program. Senior Home Repair assisted 2 seniors in making health and safety improvements to their homes. The goal is to help seniors stay in their communities and continue to live in their homes. Energy Conservation: We provided information, education and materials to assist over 5,000 households in lowering their heating bills. Additionally "low cost" materials such as plastic for windows, weather stripping, water heater blankets, roof patching materials and caulking were available for self weatherization projects for 30 families.

4b (Code:) (Expenses \$ 837,700. including grants of \$ 0.) (Revenue \$ 857,214.) In Home Assistance provides the following services: Personal Touch Home Care provided trained attendants to assist with activities of daily living to 85 people. Services include bathing and grooming assistance, meal preparation, light housekeeping, transportation and medical reminders.

4c (Code:) (Expenses \$ 949,385. including grants of \$ 33,699.) (Revenue \$ 745,354.) Housing provides the following services: Emergency Shelter provided a small amount of funding that keeps families from being evicted and becoming homeless. It also helps with maintenance and operating costs to shelters. In partnership with agencies in our 4 counties, this program provided assistance to over 842 people. Courtyard Apts operated 16 transitional units for the homeless. Residents are involved in a comprehensive case management and referral program with the ultimate goal of achieving permanent housing. The Courtyard Apartments also operate 16 units of low-income affordable housing. Section 8 Rental Voucher Program assisted 386 very low and low income families to obtain decent, safe and sanitary housing in the private market. The program provided subsidies which enabled their rent to be "affordable" based on their income. Mutual Self-Help Housing assisted 7 low and very low income families construct their own homes. Families provide 65% of the construction labor on each other's homes under qualified supervision. The savings from the reduction See Form 990, Page 2, Part III, Line 4c (continued)

4d Other program services. (Describe in Schedule O.) (Expenses \$ 1,549,214. including grants of \$ 4,000.) (Revenue \$ 18,230.)

4e Total program service expenses 5,268,132.

Part IV Checklist of Required Schedules

		Yes	No
1	Is the organization described in section 501(c)(3) or 4947(a)(1) (other than a private foundation)? If 'Yes,' complete Schedule A	X	
2	Is the organization required to complete Schedule B, Schedule of Contributors (see instructions)?		X
3	Did the organization engage in direct or indirect political campaign activities on behalf of or in opposition to candidates for public office? If 'Yes,' complete Schedule C, Part I		X
4	Section 501(c)(3) organizations Did the organization engage in lobbying activities, or have a section 501(h) election in effect during the tax year? If 'Yes,' complete Schedule C, Part II	X	
5	Is the organization a section 501(c)(4), 501(c)(5), or 501(c)(6) organization that receives membership dues, assessments, or similar amounts as defined in Revenue Procedure 98-19? If 'Yes,' complete Schedule C, Part III		X
6	Did the organization maintain any donor advised funds or any similar funds or accounts for which donors have the right to provide advice on the distribution or investment of amounts in such funds or accounts? If 'Yes,' complete Schedule D, Part I		X
7	Did the organization receive or hold a conservation easement, including easements to preserve open space, the environment, historic land areas or historic structures? If 'Yes,' complete Schedule D, Part II		X
8	Did the organization maintain collections of works of art, historical treasures, or other similar assets? If 'Yes,' complete Schedule D, Part III		X
9	Did the organization report an amount in Part X, line 21, for escrow or custodial account liability; serve as a custodian for amounts not listed in Part X; or provide credit counseling, debt management credit repair, or debt negotiation services? If 'Yes,' complete Schedule D, Part IV	X	
10	Did the organization, directly or through a related organization, hold assets in temporarily restricted endowments, permanent endowments, or quasi-endowments? If 'Yes,' complete Schedule D, Part V		X
11	If the organization's answer to any of the following questions is 'Yes', then complete Schedule D, Parts VI, VII, VIII, IX, or X as applicable.		
a	Did the organization report an amount for land, buildings and equipment in Part X, line 10? If 'Yes,' complete Schedule D, Part VI	X	
b	Did the organization report an amount for investments — other securities in Part X, line 12 that is 5% or more of its total assets reported in Part X, line 16? If 'Yes,' complete Schedule D, Part VII		X
c	Did the organization report an amount for investments — program related in Part X, line 13 that is 5% or more of its total assets reported in Part X, line 16? If 'Yes,' complete Schedule D, Part VIII		X
d	Did the organization report an amount for other assets in Part X, line 15 that is 5% or more of its total assets reported in Part X, line 16? If 'Yes,' complete Schedule D, Part IX		X
e	Did the organization report an amount for other liabilities in Part X, line 25? If 'Yes,' complete Schedule D, Part X	X	
f	Did the organization's separate or consolidated financial statements for the tax year include a footnote that addresses the organization's liability for uncertain tax positions under FIN 48 (ASC 740)? If 'Yes,' complete Schedule D, Part X	X	
12a	Did the organization obtain separate, independent audited financial statements for the tax year? If 'Yes,' complete Schedule D, Parts XI, and XII		X
b	Was the organization included in consolidated, independent audited financial statements for the tax year? If 'Yes,' and if the organization answered 'No' to line 12a, then completing Schedule D, Parts XI and XII is optional.	X	
13	Is the organization a school described in section 170(b)(1)(A)(ii)? If 'Yes,' complete Schedule E		X
14a	Did the organization maintain an office, employees, or agents outside of the United States?		X
b	Did the organization have aggregate revenues or expenses of more than \$10,000 from grantmaking, fundraising, business, investment, and program service activities outside the United States, or aggregate foreign investments valued at \$100,000 or more? If 'Yes,' complete Schedule F, Parts I and IV		X
15	Did the organization report on Part IX, column (A), line 3, more than \$5,000 of grants or assistance to any organization or entity located outside the United States? If 'Yes,' complete Schedule F, Parts II and IV		X
16	Did the organization report on Part IX, column (A), line 3, more than \$5,000 of aggregate grants or assistance to individuals located outside the United States? If 'Yes,' complete Schedule F, Parts III and IV		X
17	Did the organization report a total of more than \$15,000 of expenses for professional fundraising services on Part IX, column (A), lines 6 and 11e? If 'Yes,' complete Schedule G, Part I (see instructions)		X
18	Did the organization report more than \$15,000 total of fundraising event gross income and contributions on Part VIII, lines 1c and 8a? If 'Yes,' complete Schedule G, Part II		X
19	Did the organization report more than \$15,000 of gross income from gaming activities on Part VIII, line 9a? If 'Yes,' complete Schedule G, Part III		X
20 a	Did the organization operate one or more hospital facilities? If 'Yes,' complete Schedule H		X
b	If 'Yes' to line 20a, did the organization attach a copy of its audited financial statements to this return?		

Part V Checklist of Required Schedules (continued)

	Yes	No
21 Did the organization report more than \$5,000 of grants and other assistance to governments and organizations in the United States on Part IX, column (A), line 1? <i>If 'Yes,' complete Schedule I, Parts I and II</i>	X	
22 Did the organization report more than \$5,000 of grants and other assistance to individuals in the United States on Part IX, column (A), line 2? <i>If 'Yes,' complete Schedule I, Parts I and III</i>		X
23 Did the organization answer 'Yes' to Part VII, Section A, line 3, 4, or 5 about compensation of the organization's current and former officers, directors, trustees, key employees, and highest compensated employees? <i>If 'Yes,' complete Schedule J</i>		X
24a Did the organization have a tax-exempt bond issue with an outstanding principal amount of more than \$100,000 as of the last day of the year, and that was issued after December 31, 2002? <i>If 'Yes,' answer lines 24b through 24d and complete Schedule K. If 'No,' go to line 25</i>		X
24b Did the organization invest any proceeds of tax-exempt bonds beyond a temporary period exception?		
24c Did the organization maintain an escrow account other than a refunding escrow at any time during the year to defease any tax-exempt bonds?		
24d Did the organization act as an 'on behalf of' issuer for bonds outstanding at any time during the year?		
25a Section 501(c)(3) and 501(c)(4) organizations. Did the organization engage in an excess benefit transaction with a disqualified person during the year? <i>If 'Yes,' complete Schedule L, Part I</i>		X
25b Is the organization aware that it engaged in an excess benefit transaction with a disqualified person in a prior year, and that the transaction has not been reported on any of the organization's prior Forms 990 or 990-EZ? <i>If 'Yes,' complete Schedule L, Part I</i>		X
26 Was a loan to or by a current or former officer, director, trustee, key employee, highest compensated employee, or disqualified person outstanding as of the end of the organization's tax year? <i>If 'Yes,' complete Schedule L, Part II</i>		X
27 Did the organization provide a grant or other assistance to an officer, director, trustee, key employee, substantial contributor or employee thereof, a grant selection committee member, or to a 35% controlled entity or family member of any of these persons? <i>If 'Yes,' complete Schedule L, Part III</i>		X
28 Was the organization a party to a business transaction with one of the following parties (see Schedule L, Part IV instructions for applicable filing thresholds, conditions, and exceptions):		
28a A current or former officer, director, trustee, or key employee? <i>If 'Yes,' complete Schedule L, Part IV</i>		X
28b A family member of a current or former officer, director, trustee, or key employee? <i>If 'Yes,' complete Schedule L, Part IV</i>		X
28c An entity of which a current or former officer, director, trustee, or key employee (or a family member thereof) was an officer, director, trustee, or direct or indirect owner? <i>If 'Yes,' complete Schedule L, Part IV</i>		X
29 Did the organization receive more than \$25,000 in non-cash contributions? <i>If 'Yes,' complete Schedule M</i>		X
30 Did the organization receive contributions of art, historical treasures, or other similar assets, or qualified conservation contributions? <i>If 'Yes,' complete Schedule M</i>		X
31 Did the organization liquidate, terminate, or dissolve and cease operations? <i>If 'Yes,' complete Schedule N, Part I</i>		X
32 Did the organization sell, exchange, dispose of, or transfer more than 25% of its net assets? <i>If 'Yes,' complete Schedule N, Part II</i>		X
33 Did the organization own 100% of an entity disregarded as separate from the organization under Regulations sections 301.7701-2 and 301.7701-3? <i>If 'Yes,' complete Schedule R, Part I</i>		X
34 Was the organization related to any tax-exempt or taxable entity? <i>If 'Yes,' complete Schedule R, Parts II, III, IV, and V, line 1</i>	X	
35a Did the organization have a controlled entity within the meaning of section 512(b)(13)?	X	
35b If 'Yes' to line 35a, did the organization receive any payment from or engage in any transaction with a controlled entity within the meaning of section 512(b)(13)? <i>If 'Yes,' complete Schedule R, Part V, line 2</i>	X	
36 Section 501(c)(3) organizations. Did the organization make any transfers to an exempt non-charitable related organization? <i>If 'Yes,' complete Schedule R, Part V, line 2</i>		X
37 Did the organization conduct more than 5% of its activities through an entity that is not a related organization and that is treated as a partnership for federal income tax purposes? <i>If 'Yes,' complete Schedule R, Part VI</i>		X
38 Did the organization complete Schedule O and provide explanations in Schedule O for Part VI, lines 11b and 19? Note. All Form 990 filers are required to complete Schedule O	X	

BAA

Form 990 (2012)

Part V Statements Regarding Other IRS Filings and Tax Compliance

Check if Schedule O contains a response to any question in this Part V

		Yes	No
1 a	Enter the number reported in Box 3 of Form 1096. Enter -0- if not applicable		
1 a	42		
1 b	Enter the number of Forms W-2G included in line 1a. Enter -0- if not applicable		
1 b	0		
1 c	Did the organization comply with backup withholding rules for reportable payments to vendors and reportable gaming (gambling) winnings to prize winners?	X	
2 a	Enter the number of employees reported on Form W-3, Transmittal of Wage and Tax Statements, filed for the calendar year ending with or within the year covered by this return		
2 a	226		
2 b	If at least one is reported on line 2a, did the organization file all required federal employment tax returns? Note. If the sum of lines 1a and 2a is greater than 250, you may be required to e-file. (see instructions)	X	
3 a	Did the organization have unrelated business gross income of \$1,000 or more during the year?	X	
3 b	If 'Yes' has it filed a Form 990-T for this year? If 'No,' provide an explanation in Schedule O	X	
4 a	At any time during the calendar year, did the organization have an interest in, or a signature or other authority over, a financial account in a foreign country (such as a bank account, securities account, or other financial account)?		X
4 a			
4 b	If 'Yes,' enter the name of the foreign country: See instructions for filing requirements for Form TD F 90-22.1, Report of Foreign Bank and Financial Accounts.		
5 a	Was the organization a party to a prohibited tax shelter transaction at any time during the tax year?		X
5 b	Did any taxable party notify the organization that it was or is a party to a prohibited tax shelter transaction?		X
5 c	If 'Yes,' to line 5a or 5b, did the organization file Form 8886-T?		
6 a	Does the organization have annual gross receipts that are normally greater than \$100,000, and did the organization solicit any contributions that were not tax deductible as charitable contributions?		X
6 b	If 'Yes,' did the organization include with every solicitation an express statement that such contributions or gifts were not tax deductible?		
7	Organizations that may receive deductible contributions under section 170(c).		
7 a	Did the organization receive a payment in excess of \$75 made partly as a contribution and partly for goods and services provided to the payor?		X
7 b	If 'Yes,' did the organization notify the donor of the value of the goods or services provided?		
7 c	Did the organization sell, exchange, or otherwise dispose of tangible personal property for which it was required to file Form 8282?		X
7 d	If 'Yes,' indicate the number of Forms 8282 filed during the year		
7 d			
7 e	Did the organization receive any funds, directly or indirectly, to pay premiums on a personal benefit contract?		X
7 f	Did the organization, during the year, pay premiums, directly or indirectly, on a personal benefit contract?		X
7 g	If the organization received a contribution of qualified intellectual property, did the organization file Form 8899 as required?		
7 h	If the organization received a contribution of cars, boats, airplanes, or other vehicles, did the organization file a Form 1098-C?		
8	Sponsoring organizations maintaining donor advised funds and section 509(a)(3) supporting organizations. Did the supporting organization, or a donor advised fund maintained by a sponsoring organization, have excess business holdings at any time during the year?		
8			
9	Sponsoring organizations maintaining donor advised funds.		
9 a	Did the organization make any taxable distributions under section 4966?		
9 b	Did the organization make a distribution to a donor, donor advisor, or related person?		
10	Section 501(c)(7) organizations. Enter:		
10 a	Initiation fees and capital contributions included on Part VIII, line 12		
10 a			
10 b	Gross receipts, included on Form 990, Part VIII, line 12, for public use of club facilities		
10 b			
11	Section 501(c)(12) organizations. Enter:		
11 a	Gross income from members or shareholders		
11 a			
11 b	Gross income from other sources (Do not net amounts due or paid to other sources against amounts due or received from them.)		
11 b			
12 a	Section 4947(a)(1) non-exempt charitable trusts. Is the organization filing Form 990 in lieu of Form 1041?		
12 a			
12 b	If 'Yes,' enter the amount of tax-exempt interest received or accrued during the year		
12 b			
13	Section 501(c)(29) qualified nonprofit health insurance issuers.		
13 a	Is the organization licensed to issue qualified health plans in more than one state? Note. See the instructions for additional information the organization must report on Schedule O.		
13 a			
13 b	Enter the amount of reserves the organization is required to maintain by the states in which the organization is licensed to issue qualified health plans		
13 b			
13 c	Enter the amount of reserves on hand		
13 c			
14 a	Did the organization receive any payments for indoor tanning services during the tax year?		X
14 a			
14 b	If 'Yes,' has it filed a Form 720 to report these payments? If 'No,' provide an explanation in Schedule O		
14 b			

Part VI Governance, Management and Disclosure For each 'Yes' response to lines 2 through 7b below, and for a 'No' response to line 8a, 8b, or 10b below, describe the circumstances, processes, or changes in Schedule O. See instructions.

Check if Schedule O contains a response to any question in this Part VI. X

Section A. Governing Body and Management

		Yes	No
1 a	Enter the number of voting members of the governing body at the end of the tax year If there are material differences in voting rights among members of the governing body, or if the governing body delegated broad authority to an executive committee or similar committee, explain in Schedule O.		
1 b	Enter the number of voting members included in line 1a, above, who are independent		
2	Did any officer, director, trustee, or key employee have a family relationship or a business relationship with any other officer, director, trustee or key employee?		X
3	Did the organization delegate control over management duties customarily performed by or under the direct supervision of officers, directors or trustees, or key employees to a management company or other person?		X
4	Did the organization make any significant changes to its governing documents since the prior Form 990 was filed?		X
5	Did the organization become aware during the year of a significant diversion of the organization's assets?		X
6	Did the organization have members or stockholders?		X
7 a	Did the organization have members, stockholders, or other persons who had the power to elect or appoint one or more members of the governing body?		X
7 b	Are any governance decisions of the organization reserved to (or subject to approval by) members, stockholders, or other persons other than the governing body?		X
8	Did the organization contemporaneously document the meetings held or written actions undertaken during the year by the following:		
8 a	The governing body?	X	
8 b	Each committee with authority to act on behalf of the governing body?	X	
9	Is there any officer, director or trustee, or key employee listed in Part VII, Section A, who cannot be reached at the organization's mailing address? If 'Yes,' provide the names and addresses in Schedule O		X

Section B. Policies (This Section B requests information about policies not required by the Internal Revenue Code.)

		Yes	No
10 a	Did the organization have local chapters, branches, or affiliates?		X
10 b	If 'Yes,' did the organization have written policies and procedures governing the activities of such chapters, affiliates, and branches to ensure their operations are consistent with the organization's exempt purposes?		
11 a	Has the organization provided a complete copy of this Form 990 to all members of its governing body before filing the form?	X	
11 b	Describe in Schedule O the process, if any, used by the organization to review this Form 990.		
12 a	Did the organization have a written conflict of interest policy? If 'No,' go to line 13	X	
12 b	Were officers, directors or trustees, and key employees required to disclose annually interests that could give rise to conflicts?	X	
12 c	Did the organization regularly and consistently monitor and enforce compliance with the policy? If 'Yes,' describe in Schedule O how this is done	X	
13	Did the organization have a written whistleblower policy?	X	
14	Did the organization have a written document retention and destruction policy?	X	
15	Did the process for determining compensation of the following persons include a review and approval by independent persons, comparability data, and contemporaneous substantiation of the deliberation and decision?		
15 a	The organization's CEO, Executive Director, or top management official	X	
15 b	Other officers of key employees of the organization If 'Yes' to line 15a or 15b, describe the process in Schedule O. (See instructions.)		X
16 a	Did the organization invest in, contribute assets to, or participate in a joint venture or similar arrangement with a taxable entity during the year?		X
16 b	If 'Yes,' did the organization follow a written policy or procedure requiring the organization to evaluate its participation in joint venture arrangements under applicable federal tax law, and taken steps to safeguard the organization's exempt status with respect to such arrangements?		

Section C. Disclosure

- 17** List the states with which a copy of this Form 990 is required to be filed ►
- 18** Section 6104 requires an organization to make its Forms 1023 (or 1024 if applicable), 990, and 990-T (501(c)(3)s only) available for public inspection. Indicate how you make these available. Check all that apply.
 Own website Another's website Upon request Other (explain in Schedule O)
- 19** Describe in Schedule O whether (and if so, how) the organization makes its governing documents, conflict of interest policy, and financial statements available to the public during the tax year.
- 20** State the name, physical address, and telephone number of the person who possesses the books and records of the organization:

► Jane Nolan, Chief Financial Officer 214 Main St. Kalispell MT 59901-4454 (406) 752-6565

Part VII Compensation of Officers, Directors, Trustees, Key Employees, Highest Compensated Employees, and Independent Contractors

Check if Schedule O contains a response to any question in this Part VII

Section A. Officers, Directors, Trustees, Key Employees, and Highest Compensated Employees

1 a Complete this table for all persons required to be listed. Report compensation for the calendar year ending with or within the organization's tax year.

- List all of the organization's **current** officers, directors, trustees (whether individuals or organizations), regardless of amount of compensation. Enter -0- in columns (D), (E), and (F) if no compensation was paid.
- List all of the organization's **current** key employees, if any. See instructions for definition of 'key employee.'
- List the organization's five **current** highest compensated employees (other than an officer, director, trustee, or key employee) who received reportable compensation (Box 5 of Form W-2 and/or Box 7 of Form 1099-MISC) of more than \$100,000 from the organization and any related organizations.
- List all of the organization's **former** officers, key employees, and highest compensated employees who received more than \$100,000 of reportable compensation from the organization and any related organizations.
- List all of the organization's **former directors or trustees** that received, in the capacity as a former director or trustee of the organization, more than \$10,000 of reportable compensation from the organization and any related organizations.

List persons in the following order: individual trustees or directors; institutional trustees; officers; key employees; highest compensated employees; and former such persons.

Check this box if neither the organization nor any related organization compensated any current officer, director, or trustee.

(A) Name and Title	(B) Average hours per week (list any hours for related organizations below dotted line)	(C) Position (do not check more than one box, unless person is both an officer and a director/trustee)						(D) Reportable compensation from the organization (W-2/1099-MISC)	(E) Reportable compensation from related organizations (W-2/1099-MISC)	(F) Estimated amount of other compensation from the organization and related organizations
		Individual trustee or director	Institutional trustee	Officer	Key employee	Highest compensated employee	Former			
(1) Faith Hodges President	0.50	X					0.	0.	0.	
(2) Duane Lutke Vice President	0.50	X					0.	0.	0.	
(3) Linda Landrum Secretary Treasurer	0.50	X					0.	0.	0.	
(4) Ethel White Director	0.50	X					0.	0.	0.	
(5) Marianne Roose Director	0.50	X					0.	0.	0.	
(6) Ernest Scherzer Director	0.50	X					0.	0.	0.	
(7) Ann Brower Director	0.50	X					0.	0.	0.	
(8) Glen Magera Director	0.50	X					0.	0.	0.	
(9) Holly Walsh Director	0.50	X					0.	0.	0.	
(10) Renee Funk Director	0.50	X					0.	0.	0.	
(11) Laura Burrowes Director	0.50	X					0.	0.	0.	
(12) Kate Huntsberger Director	0.50	X					0.	0.	0.	
(13) Douglas Rauthe Executive Director	45.00			X			85,283.	0.	13,671.	
(14) Jane Nolan Chief Financial Officer	45.00			X			67,358.	0.	11,052.	

Part VII Section A. Officers, Directors, Trustees, Key Employees, and Highest Compensated Employees (cont)

(A) Name and title	(B) Average hours per week (list any hours for related organizations below dotted line)	(C) Position (do not check more than one box, unless person is both an officer and a director/trustee)						(D) Reportable compensation from the organization (W-2/1099-MISC)	(E) Reportable compensation from related organizations (W-2/1099-MISC)	(F) Estimated amount of other compensation from the organization and related organizations
		Individual trustee or director	Institutional trustee	Officer	Key employee	Highest compensated employee	Former			
(15) -----										
(16) -----										
(17) -----										
(18) -----										
(19) -----										
(20) -----										
(21) -----										
(22) -----										
(23) -----										
(24) -----										
(25) -----										
1 b Sub-total							152,641.	0.	24,723.	
c Total from continuation sheets to Part VII, Section A										
d Total (add lines 1b and 1c)							152,641.	0.	24,723.	

2 Total number of individuals (including but not limited to those listed above) who received more than \$100,000 of reportable compensation from the organization ▶ 0

	Yes	No
3 Did the organization list any former officer, director or trustee, key employee, or highest compensated employee on line 1a? <i>If 'Yes,' complete Schedule J for such individual</i>		X
4 For any individual listed on line 1a, is the sum of reportable compensation and other compensation from the organization and related organizations greater than \$150,000? <i>If 'Yes' complete Schedule J for such individual</i>		X
5 Did any person listed on line 1a receive or accrue compensation from any unrelated organization or individual for services rendered to the organization? <i>If 'Yes,' complete Schedule J for such person</i>		X

Section B. Independent Contractors

1 Complete this table for your five highest compensated independent contractors that received more than \$100,000 of compensation from the organization. Report compensation for the calendar year ending with or within the organization's tax year.

(A) Name and business address	(B) Description of services	(C) Compensation
McCrorie Furnace 12500 Pinkham Creek Road Rexford MT 59930	Furnace Contractor	135,072.

2 Total number of independent contractors (including but not limited to those listed above) who received more than \$100,000 in compensation from the organization ▶ 1

Part VIII Statement of Revenue

Check if Schedule O contains a response to any question in this Part VIII

			(A) Total revenue	(B) Related or exempt function revenue	(C) Unrelated business revenue	(D) Revenue excluded from tax under sections 512, 513, or 514	
CONTRIBUTIONS, GIFTS, GRANTS AND OTHER SIMILAR AMOUNTS	1 a Federated campaigns	1 a					
	b Membership dues	1 b					
	c Fundraising events	1 c					
	d Related organizations	1 d					
	e Government grants (contributions)	1 e	4,251,467.				
	f All other contributions, gifts, grants, and similar amounts not included above ...	1 f	35,896.				
	g Noncash contributions included in lns 1a-1f: \$						
	h Total. Add lines 1a-1f		4,287,363.				
PROGRAM SERVICE REVENUE	2 a <u>In-Home Care</u>		Business Code				
		624110	857,214.	857,214.	0.	0.	
	b <u>Energy Program - IIEAP</u>	624200	474,568.	474,568.	0.	0.	
	c <u>Housing Programs</u>	624200	393,912.	393,912.	0.	0.	
	d <u>Job Training Program</u>	624310	3,136.	3,136.	0.	0.	
	e <u>Community Services</u>	624100	15,094.	15,094.	0.	0.	
	f All other program service revenue		47,218.	47,218.	0.	0.	
g Total. Add lines 2a-2f		1,791,142.					
OTHER REVENUE	3 Investment income (including dividends, interest and other similar amounts)		27,091.	0.	0.	27,091.	
	4 Income from investment of tax-exempt bond proceeds ..						
	5 Royalties						
	6 a Gross rents	(i) Real	(ii) Personal				
		b Less: rental expenses					
		c Rental income or (loss) ...					
		d Net rental income or (loss)					
	7 a Gross amount from sales of assets other than inventory .	(i) Securities	(ii) Other				
		b Less: cost or other basis and sales expenses					
		c Gain or (loss)					
		d Net gain or (loss)					
	8 a Gross income from fundraising events (not including \$ _____ of contributions reported on line 1c). See Part IV, line 18	a					
	b Less: direct expenses	b					
	c Net income or (loss) from fundraising events						
	9 a Gross income from gaming activities. See Part IV, line 19	a					
b Less: direct expenses	b						
c Net income or (loss) from gaming activities							
10 a Gross sales of inventory, less returns and allowances	a	1,360,717.					
	b Less: cost of goods sold	b	1,056,493.				
	c Net income or (loss) from sales of inventory		304,224.	304,224.	0.	0.	
Miscellaneous Revenue		Business Code					
11 a <u>Gross Rental Income</u>	531120	16,824.	0.	16,824.	0.		
b							
c							
d All other revenue							
e Total. Add lines 11a-11d		16,824.					
12 Total revenue. See instructions		6,426,644.	2,095,366.	16,824.	27,091.		

Part IX Statement of Functional Expenses

Section 501(c)(3) and 501(c)(4) organizations must complete all columns. All other organizations must complete column (A).

Check if Schedule O contains a response to any question in this Part IX

Do not include amounts reported on lines 6b, 7b, 8b, 9b, and 10b of Part VIII.	(A) Total expenses	(B) Program service expenses	(C) Management and general expenses	(D) Fundraising expenses
1 Grants and other assistance to governments and organizations in the United States. See Part IV, line 21	37,699.	37,699.		
2 Grants and other assistance to individuals in the United States. See Part IV, line 22				
3 Grants and other assistance to governments, organizations, and individuals outside the United States. See Part IV, lines 15 and 16				
4 Benefits paid to or for members				
5 Compensation of current officers, directors, trustees, and key employees	177,364.	0.	177,364.	0.
6 Compensation not included above, to disqualified persons (as defined under section 4958(f)(1)) and persons described in section 4958(c)(3)(B)				
7 Other salaries and wages	2,138,840.	1,929,800.	209,040.	0.
8 Pension plan accruals and contributions (include section 401(k) and section 403(b) employer contributions)	51,813.	49,317.	2,496.	0.
9 Other employee benefits	293,073.	248,341.	44,732.	0.
10 Payroll taxes	327,237.	300,045.	27,192.	0.
11 Fees for services (non-employees):				
a Management				
b Legal	27,043.	25,948.	1,095.	0.
c Accounting	23,950.	23,950.	0.	0.
d Lobbying				
e Professional fundraising services. See Part IV, line 17				
f Investment management fees				
g Other. (If line 11g amt exceeds 10% of line 25, column (A) amt, list line 11g expenses on Sch O)	63,575.	57,334.	6,241.	0.
12 Advertising and promotion				
13 Office expenses	252,774.	165,672.	87,102.	0.
14 Information technology				
15 Royalties				
16 Occupancy	136,290.	102,560.	33,730.	0.
17 Travel	141,907.	138,375.	3,532.	0.
18 Payments of travel or entertainment expenses for any federal, state, or local public officials				
19 Conferences, conventions, and meetings				
20 Interest	67,286.	67,286.	0.	0.
21 Payments to affiliates				
22 Depreciation, depletion, and amortization	109,619.	109,619.	0.	0.
23 Insurance	86,295.	35,427.	50,868.	0.
24 Other expenses. Itemize expenses not covered above (List miscellaneous expenses in line 24e. If line 24e amount exceeds 10% of line 25, column (A) amount, list line 24e expenses on Schedule O.)				
a <u>Bad Debt</u>	21,471.	21,471.	0.	0.
b <u>Program Specific Costs Direct Sys</u>	1,879,546.	1,879,546.	0.	0.
c <u>Program Related Expenses</u>	78,115.	75,742.	2,373.	0.
d				
e All other expenses				
25 Total functional expenses. Add lines 1 through 24e	5,913,897.	5,268,132.	645,765.	0.
26 Joint costs. Complete this line only if the organization reported in column (B) joint costs from a combined educational campaign and fundraising solicitation. Check here <input type="checkbox"/> if following SOP 98-2 (ASC 958-720)				

Part X Balance Sheet

Check if Schedule O contains a response to any question in this Part X

		(A) Beginning of year		(B) End of year		
ASSETS	1	Cash – non-interest-bearing	67,851.	1	41,912.	
	2	Savings and temporary cash investments	2,353,777.	2	3,323,153.	
	3	Pledges and grants receivable, net	546,460.	3	1,027,806.	
	4	Accounts receivable, net	199,875.	4	94,591.	
	5	Loans and other receivables from current and former officers, directors, trustees, key employees, and highest compensated employees. Complete Part II of Schedule L		5		
	6	Loans and other receivables from other disqualified persons (as defined under section 4958(f)(1)), persons described in section 4958(c)(3)(B), and contributing employers and sponsoring organizations of section 501(c)(9) voluntary employees' beneficiary organizations (see instructions). Complete Part II of Schedule L		6		
	7	Notes and loans receivable, net	1,256,838.	7	1,272,194.	
	8	Inventories for sale or use	822,333.	8	540,348.	
	9	Prepaid expenses and deferred charges	235,637.	9	45,781.	
	10a	Land, buildings, and equipment: cost or other basis. Complete Part VI of Schedule D	10a	2,958,337.		
	10b	Less: accumulated depreciation	10b	1,568,475.	10c	1,389,862.
	11	Investments – publicly traded securities		11		
	12	Investments – other securities. See Part IV, line 11		12		
	13	Investments – program-related. See Part IV, line 11		13		
	14	Intangible assets		14		
	15	Other assets. See Part IV, line 11		15		
16	Total assets. Add lines 1 through 15 (must equal line 34)	6,804,314.	16	7,735,647.		
LIABILITIES	17	Accounts payable and accrued expenses	132,692.	17	141,070.	
	18	Grants payable		18		
	19	Deferred revenue	14,366.	19	14,175.	
	20	Tax-exempt bond liabilities		20		
	21	Escrow or custodial account liability. Complete Part IV of Schedule D	811,198.	21	828,897.	
	22	Loans and other payables to current and former officers, directors, trustees, key employees, highest compensated employees, and disqualified persons. Complete Part II of Schedule L		22		
	23	Secured mortgages and notes payable to unrelated third parties	1,555,638.	23	1,965,212.	
	24	Unsecured notes and loans payable to unrelated third parties		24		
	25	Other liabilities (including federal income tax, payables to related third parties, and other liabilities not included on lines 17-24). Complete Part X of Schedule D ..	267,657.	25	250,783.	
	26	Total liabilities. Add lines 17 through 25	2,781,551.	26	3,200,137.	
NET ASSETS OR FUND BALANCES	Organizations that follow SFAS 117 (ASC 958), check here <input checked="" type="checkbox"/> and complete lines 27 through 29, and lines 33 and 34.					
	27	Unrestricted net assets	3,065,575.	27	3,694,965.	
	28	Temporarily restricted net assets	957,188.	28	840,545.	
	29	Permanently restricted net assets		29		
	Organizations that do not follow SFAS 117 (ASC 958), check here <input type="checkbox"/> and complete lines 30 through 34.					
	30	Capital stock or trust principal, or current funds		30		
	31	Paid-in or capital surplus, or land, building, or equipment fund		31		
	32	Retained earnings, endowment, accumulated income, or other funds		32		
33	Total net assets or fund balances	4,022,763.	33	4,535,510.		
34	Total liabilities and net assets/fund balances	6,804,314.	34	7,735,647.		

BAA

Form 990 (2012)

Part XI Reconciliation of Net Assets

Check if Schedule O contains a response to any question in this Part XI

1	Total revenue (must equal Part VIII, column (A), line 12)	1	6,426,644.
2	Total expenses (must equal Part IX, column (A), line 25)	2	5,913,897.
3	Revenue less expenses. Subtract line 2 from line 1	3	512,747.
4	Net assets or fund balances at beginning of year (must equal Part X, line 33, column (A))	4	4,022,763.
5	Net unrealized gains (losses) on investments	5	
6	Donated services and use of facilities	6	
7	Investment expenses	7	
8	Prior period adjustments	8	
9	Other changes in net assets or fund balances (explain in Schedule O)	9	
10	Net assets or fund balances at end of year. Combine lines 3 through 9 (must equal Part X, line 33, column (B))	10	4,535,510.

Part XII Financial Statements and Reporting

Check if Schedule O contains a response to any question in this Part XII

		Yes	No
1	Accounting method used to prepare the Form 990: <input type="checkbox"/> Cash <input checked="" type="checkbox"/> Accrual <input type="checkbox"/> Other _____ If the organization changed its method of accounting from a prior year or checked 'Other,' explain in Schedule O.		
2 a	Were the organization's financial statements compiled or reviewed by an independent accountant? If 'Yes,' check a box below to indicate whether the financial statements for the year were compiled or reviewed on a separate basis, consolidated basis, or both: <input type="checkbox"/> Separate basis <input type="checkbox"/> Consolidated basis <input type="checkbox"/> Both consolidated and separate basis		X
2 b	Were the organization's financial statements audited by an independent accountant? If 'Yes,' check a box below to indicate whether the financial statements for the year were audited on a separate basis, consolidated basis, or both: <input type="checkbox"/> Separate basis <input checked="" type="checkbox"/> Consolidated basis <input type="checkbox"/> Both consolidated and separate basis	X	
2 c	If 'Yes' to line 2a or 2b, does the organization have a committee that assumes responsibility for oversight of the audit, review, or compilation of its financial statements and selection of an independent accountant? If the organization changed either its oversight process or selection process during the tax year, explain in Schedule O.	X	
3 a	As a result of a federal award, was the organization required to undergo an audit or audits as set forth in the Single Audit Act and OMB Circular A-133?	X	
3 b	If 'Yes,' did the organization undergo the required audit or audits? If the organization did not undergo the required audit or audits, explain why in Schedule O and describe any steps taken to undergo such audits	X	

BAA

SCHEDULE A
(Form 990 or 990-EZ)

Public Charity Status and Public Support

OMB No. 1545-0047

2012

Complete if the organization is a section 501(c)(3) organization or a section 4947(a)(1) nonexempt charitable trust.

Open to Public Inspection

Department of the Treasury
Internal Revenue Service

▶ Attach to Form 990 or Form 990-EZ. ▶ See separate instructions.

Name of the organization: **Northwest Montana Human Resources, Inc.**
Employer identification number: **81-0366018**

Part I Reason for Public Charity Status (All organizations must complete this part.) See instructions.

The organization is not a private foundation because it is: (For lines 1 through 11, check only one box.)

- 1 A church, convention of churches or association of churches described in **section 170(b)(1)(A)(i).**
- 2 A school described in **section 170(b)(1)(A)(ii).** (Attach Schedule E.)
- 3 A hospital or a cooperative hospital service organization described in **section 170(b)(1)(A)(iii).**
- 4 A medical research organization operated in conjunction with a hospital described in **section 170(b)(1)(A)(iii).** Enter the hospital's name, city, and state: _____
- 5 An organization operated for the benefit of a college or university owned or operated by a governmental unit described in **section 170(b)(1)(A)(iv).** (Complete Part II.)
- 6 A federal, state, or local government or governmental unit described in **section 170(b)(1)(A)(v).**
- 7 An organization that normally receives a substantial part of its support from a governmental unit or from the general public described in **section 170(b)(1)(A)(vi).** (Complete Part II.)
- 8 A community trust described in **section 170(b)(1)(A)(vi).** (Complete Part II.)
- 9 An organization that normally receives: (1) more than 33-1/3% of its support from contributions, membership fees, and gross receipts from activities related to its exempt functions – subject to certain exceptions, and (2) no more than 33-1/3% of its support from gross investment income and unrelated business taxable income (less section 511 tax) from businesses acquired by the organization after June 30, 1975. See **section 509(a)(2).** (Complete Part III.)
- 10 An organization organized and operated exclusively to test for public safety. See **section 509(a)(4).**
- 11 An organization organized and operated exclusively for the benefit of, to perform the functions of, or carry out the purposes of one or more publicly supported organizations described in section 509(a)(1) or section 509(a)(2). See **section 509(a)(3).** Check the box that describes the type of supporting organization and complete lines 11e through 11h.
 - a Type I b Type II c Type III – Functionally integrated d Type III – Non-functionally integrated
- e By checking this box, I certify that the organization is not controlled directly or indirectly by one or more disqualified persons other than foundation managers and other than one or more publicly supported organizations described in section 509(a)(1) or section 509(a)(2).
- f If the organization received a written determination from the IRS that is a Type I, Type II or Type III supporting organization, check this box
- g Since August 17, 2006, has the organization accepted any gift or contribution from any of the following persons?

	Yes	No
(i) A person who directly or indirectly controls, either alone or together with persons described in (ii) and (iii) below, the governing body of the supported organization?	11 g (i)	
(ii) A family member of a person described in (i) above?	11 g (ii)	
(iii) A 35% controlled entity of a person described in (i) or (ii) above?	11 g (iii)	

(i) Name of supported organization	(ii) EIN	(iii) Type of organization (described on lines 1-9 above or IRC section (see instructions))	(iv) Is the organization in column (i) listed in your governing document?		(v) Did you notify the organization in column (i) of your support?		(vi) Is the organization in column (i) organized in the U.S.?		(vii) Amount of monetary support
			Yes	No	Yes	No	Yes	No	
(A)									
(B)									
(C)									
(D)									
(E)									
Total									

Part II Support Schedule for Organizations Described in Sections 170(b)(1)(A)(iv) and 170(b)(1)(A)(vi)

(Complete only if you checked the box on line 5, 7, or 8 of Part I or if the organization failed to qualify under Part III. If the organization fails to qualify under the tests listed below, please complete Part III.)

Section A. Public Support

Calendar year (or fiscal year beginning in) ▶	(a) 2008	(b) 2009	(c) 2010	(d) 2011	(e) 2012	(f) Total
1 Gifts, grants, contributions, and membership fees received. (Do not include any 'unusual grants'.)	3,135,901.	4,878,373.	9,024,963.	5,600,556.	4,287,363.	26,927,156.
2 Tax revenues levied for the organization's benefit and either paid to or expended on its behalf	0.	0.	0.	0.	0.	0.
3 The value of services or facilities furnished by a governmental unit to the organization without charge	0.	0.	0.	0.	0.	0.
4 Total. Add lines 1 through 3	3,135,901.	4,878,373.	9,024,963.	5,600,556.	4,287,363.	26,927,156.
5 The portion of total contributions by each person (other than a governmental unit or publicly supported organization) included on line 1 that exceeds 2% of the amount shown on line 11, column (f)						
6 Public support. Subtract line 5 from line 4						26,927,156.

Section B. Total Support

Calendar year (or fiscal year beginning in) ▶	(a) 2008	(b) 2009	(c) 2010	(d) 2011	(e) 2012	(f) Total
7 Amounts from line 4	3,135,901.	4,878,373.	9,024,963.	5,600,556.	4,287,363.	26,927,156.
8 Gross income from interest, dividends, payments received on securities loans, rents, royalties and income from similar sources	56,120.	44,398.	34,614.	28,361.	27,091.	190,584.
9 Net income from unrelated business activities, whether or not the business is regularly carried on	0.	0.	443.	704.	180.	1,327.
10 Other income. Do not include gain or loss from the sale of capital assets (Explain in Part IV.)	302,247.	111,217.	46,998.	11,997.	0.	472,459.
11 Total support. Add lines 7 through 10						27,591,526.
12 Gross receipts from related activities, etc (see instructions)					12	12,470,545.
13 First five years. If the Form 990 is for the organization's first, second, third, fourth, or fifth tax year as a section 501(c)(3) organization, check this box and stop here ▶ <input type="checkbox"/>						

Section C. Computation of Public Support Percentage

14 Public support percentage for 2012 (line 6, column (f) divided by line 11, column (f))	14	97.59%
15 Public support percentage from 2011 Schedule A, Part II, line 14	15	96.62%
16a 33-1/3% support test – 2012. If the organization did not check the box on line 13, and the line 14 is 33-1/3% or more, check this box and stop here. The organization qualifies as a publicly supported organization ▶ <input checked="" type="checkbox"/>		
b 33-1/3% support test – 2011. If the organization did not check a box on line 13 or 16a, and line 15 is 33-1/3% or more, check this box and stop here. The organization qualifies as a publicly supported organization ▶ <input type="checkbox"/>		
17a 10%-facts-and-circumstances test – 2012. If the organization did not check a box on line 13, 16a, or 16b, and line 14 is 10% or more, and if the organization meets the 'facts-and-circumstances' test, check this box and stop here. Explain in Part IV how the organization meets the 'facts-and-circumstances' test. The organization qualifies as a publicly supported organization ▶ <input type="checkbox"/>		
b 10%-facts-and-circumstances test – 2011. If the organization did not check a box on line 13, 16a, 16b, or 17a, and line 15 is 10% or more, and if the organization meets the 'facts-and-circumstances' test, check this box and stop here. Explain in Part IV how the organization meets the 'facts-and-circumstances' test. The organization qualifies as a publicly supported organization ▶ <input type="checkbox"/>		
18 Private foundation. If the organization did not check a box on line 13, 16a, 16b, 17a, or 17b, check this box and see instructions ▶ <input type="checkbox"/>		

Part III Support Schedule for Organizations Described in Section 509(a)(2)

(Complete only if you checked the box on line 9 of Part I or if the organization failed to qualify under Part II. If the organization fails to qualify under the tests listed below, please complete Part II.)

Section A. Public Support

Calendar year (or fiscal yr beginning in) ▶	(a) 2008	(b) 2009	(c) 2010	(d) 2011	(e) 2012	(f) Total
1 Gifts, grants, contributions and membership fees received. (Do not include any 'unusual grants'.)						
2 Gross receipts from admissions, merchandise sold or services performed, or facilities furnished in any activity that is related to the organization's tax-exempt purpose						
3 Gross receipts from activities that are not an unrelated trade or business under section 513						
4 Tax revenues levied for the organization's benefit and either paid to or expended on its behalf						
5 The value of services or facilities furnished by a governmental unit to the organization without charge						
6 Total. Add lines 1 through 5						
7a Amounts included on lines 1, 2, and 3 received from disqualified persons						
b Amounts included on lines 2 and 3 received from other than disqualified persons that exceed the greater of \$5,000 or 1% of the amount on line 13 for the year						
c Add lines 7a and 7b						
8 Public support. (Subtract line 7c from line 6.)						

Section B. Total Support

Calendar year (or fiscal yr beginning in) ▶	(a) 2008	(b) 2009	(c) 2010	(d) 2011	(e) 2012	(f) Total
9 Amounts from line 6						
10a Gross income from interest, dividends, payments received on securities loans, rents, royalties and income from similar sources						
b Unrelated business taxable income (less section 511 taxes) from businesses acquired after June 30, 1975						
c Add lines 10a and 10b						
11 Net income from unrelated business activities not included in line 10b, whether or not the business is regularly carried on						
12 Other income. Do not include gain or loss from the sale of capital assets (Explain in Part IV.)						
13 Total support. (Add lns 9, 10c, 11, and 12.)						

14 First five years. If the Form 990 is for the organization's first, second, third, fourth, or fifth tax year as a section 501(c)(3) organization, check this box and **stop here**

Section C. Computation of Public Support Percentage

15 Public support percentage for 2012 (line 8, column (f) divided by line 13, column (f))	15	⊘
16 Public support percentage from 2011 Schedule A, Part III, line 15	16	⊘

Section D. Computation of Investment Income Percentage

17 Investment income percentage for 2012 (line 10c, column (f) divided by line 13, column (f))	17	⊘
18 Investment income percentage from 2011 Schedule A, Part III, line 17	18	⊘

19a 33-1/3% support tests – 2012. If the organization did not check the box on line 14, and line 15 is more than 33-1/3%, and line 17 is not more than 33-1/3%, check this box and **stop here**. The organization qualifies as a publicly supported organization

b 33-1/3% support tests – 2011. If the organization did not check a box on line 14 or line 19a, and line 16 is more than 33-1/3%, and line 18 is not more than 33-1/3%, check this box and **stop here**. The organization qualifies as a publicly supported organization

20 Private foundation. If the organization did not check a box on line 14, 19a, or 19b, check this box and see instructions

SCHEDULE C
(Form 990 or 990-EZ)

Political Campaign and Lobbying Activities

OMB No. 1545-0047

2012

Department of the Treasury
Internal Revenue Service

For Organizations Exempt From Income Tax Under section 501(c) and section 527

▶ **Complete if the organization is described below. ▶ Attach to Form 990 or Form 990-EZ.**
▶ **See separate instructions.**

Open to Public Inspection

If the organization answered 'Yes,' to Form 990, Part IV, line 3, or Form 990-EZ, Part V, line 46 (Political Campaign Activities), then

- Section 501(c)(3) organizations: Complete Parts I-A and B. Do not complete Part I-C.
- Section 501(c) (other than section 501(c)(3)) organizations: Complete Parts I-A and C below. Do not complete Part I-B.
- Section 527 organizations: Complete Part I-A only.

If the organization answered 'Yes,' to Form 990, Part IV, line 4, or Form 990-EZ, Part VI, line 47 (Lobbying Activities), then

- Section 501(c)(3) organizations that have filed Form 5768 (election under section 501(h)): Complete Part II-A. Do not complete Part II-B.
- Section 501(c)(3) organizations that have NOT filed Form 5768 (election under section 501(h)): Complete Part II-B. Do not complete Part II-A.

If the organization answered 'Yes,' to Form 990, Part IV, line 5 (Proxy Tax) or Form 990-EZ, Part V, line 35a (Proxy Tax), then

- Section 501(c)(4), (5), or (6) organizations: Complete Part III.

Name of organization Northwest Montana Human Resources, Inc.	Employer identification number 81-0366018
--	---

Part I-A Complete if the organization is exempt under section 501(c) or is a section 527 organization.

- 1 Provide a description of the organization's direct and indirect political campaign activities in Part IV.
- 2 Political expenditures ▶ \$ _____
- 3 Volunteer hours

Part I-B Complete if the organization is exempt under section 501(c)(3).

- 1 Enter the amount of any excise tax incurred by the organization under section 4955 ▶ \$ _____
- 2 Enter the amount of any excise tax incurred by organization managers under section 4955 ▶ \$ _____
- 3 If the organization incurred a section 4955 tax, did it file Form 4720 for this year? Yes No
- 4a Was a correction made? Yes No
- b If 'Yes,' describe in Part IV.

Part I-C Complete if the organization is exempt under section 501(c), except section 501(c)(3).

- 1 Enter the amount directly expended by the filing organization for section 527 exempt function activities ▶ \$ _____
- 2 Enter the amount of the filing organization's funds contributed to other organizations for section 527 exempt function activities ▶ \$ _____
- 3 Total exempt function expenditures. Add lines 1 and 2. Enter here and on Form 1120-POL, line 17b ▶ \$ _____
- 4 Did the filing organization file **Form 1120-POL** for this year? Yes No
- 5 Enter the names, addresses and employer identification number (EIN) of all section 527 political organizations to which the filing organization made payments. For each organization listed, enter the amount paid from the filing organization's funds. Also enter the amount of political contributions received that were promptly and directly delivered to a separate political organization, such as a separate segregated fund or a political action committee (PAC). If additional space is needed, provide information in Part IV.

(a) Name	(b) Address	(c) EIN	(d) Amount paid from filing organization's funds. If none, enter -0-.	(e) Amount of political contributions received and promptly and directly delivered to a separate political organization. If none, enter -0-.
(1)	-----			
(2)	-----			
(3)	-----			
(4)	-----			
(5)	-----			
(6)	-----			

Part I A Complete if the organization is exempt under section 501(c)(3) and filed Form 5768 (election under section 501(h)).

- A** Check if the filing organization belongs to an affiliated group (and list in Part IV each affiliated group member's name, address, EIN, expenses, and share of excess lobbying expenditures).
B Check if the filing organization checked box A and 'limited control' provisions apply.

Limits on Lobbying Expenditures (The term 'expenditures' means amounts paid or incurred.)		(a) Filing organization's totals	(b) Affiliated group totals												
1 a Total lobbying expenditures to influence public opinion (grass roots lobbying)		0.													
b Total lobbying expenditures to influence a legislative body (direct lobbying)		185.													
c Total lobbying expenditures (add lines 1a and 1b)		185.													
d Other exempt purpose expenditures		5,913,712.													
e Total exempt purpose expenditures (add lines 1c and 1d)		5,913,897.													
f Lobbying nontaxable amount. Enter the amount from the following table in both columns		445,695.													
<table border="1"> <thead> <tr> <th>If the amount on line 1e, column (a) or (b) is:</th> <th>The lobbying nontaxable amount is:</th> </tr> </thead> <tbody> <tr> <td>Not over \$500,000</td> <td>20% of the amount on line 1e.</td> </tr> <tr> <td>Over \$500,000 but not over \$1,000,000</td> <td>\$100,000 plus 15% of the excess over \$500,000.</td> </tr> <tr> <td>Over \$1,000,000 but not over \$1,500,000</td> <td>\$175,000 plus 10% of the excess over \$1,000,000.</td> </tr> <tr> <td>Over \$1,500,000 but not over \$17,000,000</td> <td>\$225,000 plus 5% of the excess over \$1,500,000.</td> </tr> <tr> <td>Over \$17,000,000</td> <td>\$1,000,000.</td> </tr> </tbody> </table>		If the amount on line 1e, column (a) or (b) is:	The lobbying nontaxable amount is:	Not over \$500,000	20% of the amount on line 1e.	Over \$500,000 but not over \$1,000,000	\$100,000 plus 15% of the excess over \$500,000.	Over \$1,000,000 but not over \$1,500,000	\$175,000 plus 10% of the excess over \$1,000,000.	Over \$1,500,000 but not over \$17,000,000	\$225,000 plus 5% of the excess over \$1,500,000.	Over \$17,000,000	\$1,000,000.		
If the amount on line 1e, column (a) or (b) is:	The lobbying nontaxable amount is:														
Not over \$500,000	20% of the amount on line 1e.														
Over \$500,000 but not over \$1,000,000	\$100,000 plus 15% of the excess over \$500,000.														
Over \$1,000,000 but not over \$1,500,000	\$175,000 plus 10% of the excess over \$1,000,000.														
Over \$1,500,000 but not over \$17,000,000	\$225,000 plus 5% of the excess over \$1,500,000.														
Over \$17,000,000	\$1,000,000.														
g Grassroots nontaxable amount (enter 25% of line 1f)		111,424.													
h Subtract line 1g from line 1a. If zero or less, enter -0-		0.													
i Subtract line 1f from line 1c. If zero or less, enter -0-		0.													
j If there is an amount other than zero on either line 1h or line 1i, did the organization file Form 4720 reporting section 4911 tax for this year?			<input type="checkbox"/> Yes <input type="checkbox"/> No												

4-Year Averaging Period Under Section 501(h)
 (Some organizations that made a section 501(h) election do not have to complete all of the five columns below. See the instructions for lines 2a through 2f.)

Lobbying Expenditures During 4-Year Averaging Period					
Calendar year (or fiscal year beginning in)	(a) 2009	(b) 2010	(c) 2011	(d) 2012	(e) Total
2 a Lobbying non-taxable amount	520,947.	728,974.	524,091.	446,695.	2,220,707.
b Lobbying ceiling amount (150% of line 2a, column (e))					3,331,061.
c Total lobbying expenditures	166.	1,611.	3,089.	185.	5,051.
d Grassroots nontaxable amount	130,237.	182,244.	131,023.	111,424.	554,928.
e Grassroots ceiling amount (150% of line 2d, column (e))					832,392.
f Grassroots lobbying expenditures	0.	0.	0.	0.	0.

BAA

Part II-B Complete if the organization is exempt under section 501(c)(3) and has NOT filed Form 5768 (election under section 501(h)).

For each 'Yes' response to lines 1a through 1i below, provide in Part IV a detailed description of the lobbying activity.	(a)		(b)
	Yes	No	Amount
1 During the year, did the filing organization attempt to influence foreign, national, state or local legislation, including any attempt to influence public opinion on a legislative matter or referendum, through the use of:			
a Volunteers?			
b Paid staff or management (include compensation in expenses reported on lines 1c through 1i)?			
c Media advertisements?			
d Mailings to members, legislators, or the public?			
e Publications, or published or broadcast statements?			
f Grants to other organizations for lobbying purposes?			
g Direct contact with legislators, their staffs, government officials, or a legislative body?			
h Rallies, demonstrations, seminars, conventions, speeches, lectures, or any similar means?			
i Other activities?			
j Total. Add lines 1c through 1i			
2a Did the activities in line 1 cause the organization to be not described in section 501(c)(3)?			
b If 'Yes,' enter the amount of any tax incurred under section 4912			
c If 'Yes,' enter the amount of any tax incurred by organization managers under section 4912			
d If the filing organization incurred a section 4912 tax, did it file Form 4720 for this year?			

Part III-A Complete if the organization is exempt under section 501(c)(4), section 501(c)(5), or section 501(c)(6).

	Yes	No
1 Were substantially all (90% or more) dues received nondeductible by members?	1	
2 Did the organization make only in-house lobbying expenditures of \$2,000 or less?	2	
3 Did the organization agree to carry over lobbying and political expenditures from the prior year?	3	

Part III-B Complete if the organization is exempt under section 501(c)(4), section 501(c)(5), or section 501(c)(6) and if either (a) BOTH Part III-A, lines 1 and 2, are answered 'No' OR (b) Part III-A, line 3, is answered 'Yes.'

1 Dues, assessments and similar amounts from members	1	
2 Section 162(e) nondeductible lobbying and political expenditures (do not include amounts of political expenses for which the section 527(f) tax was paid).		
a Current year	2 a	
b Carryover from last year	2 b	
c Total	2 c	
3 Aggregate amount reported in section 6033(e)(1)(A) notices of nondeductible section 162(e) dues	3	
4 If notices were sent and the amount on line 2c exceeds the amount on line 3, what portion of the excess does the organization agree to carryover to the reasonable estimate of nondeductible lobbying and political expenditure next year?	4	
5 Taxable amount of lobbying and political expenditures (see instructions)	5	

Part IV Supplemental Information

Complete this part to provide the descriptions required for Part I-A, line 1; Part I-B, line 4; Part I-C, line 5; Part II-A (affiliated group list); Part II-A, line 2; and Part II-B, line 1. Also, complete this part for any additional information.

Part IV Supplemental Information *(continued)*

**SCHEDULE D
(Form 990)**

Department of the Treasury
Internal Revenue Service

Supplemental Financial Statements

▶ Complete if the organization answered 'Yes,' to Form 990, Part IV, lines 6, 7, 8, 9, 10, 11a, 11b, 11c, 11d, 11e, 11f, 12a, or 12b.
▶ Attach to Form 990. ▶ See separate instructions.

OMB No. 1545-0047

2012

Open to Public Inspection

Name of the organization

Employer identification number

Northwest Montana Human Resources, Inc.

81-0366018

Part I Organizations Maintaining Donor Advised Funds or Other Similar Funds or Accounts. Complete if the organization answered 'Yes' to Form 990, Part IV, line 6.

	(a) Donor advised funds	(b) Funds and other accounts
1 Total number at end of year		
2 Aggregate contributions to (during year)		
3 Aggregate grants from (during year)		
4 Aggregate value at end of year		
5 Did the organization inform all donors and donor advisors in writing that the assets held in donor advised funds are the organization's property, subject to the organization's exclusive legal control?	<input type="checkbox"/> Yes	<input type="checkbox"/> No
6 Did the organization inform all grantees, donors, and donor advisors in writing that grant funds can be used only for charitable purposes and not for the benefit of the donor or donor advisor, or for any other purpose conferring impermissible private benefit?	<input type="checkbox"/> Yes	<input type="checkbox"/> No

Part II Conservation Easements. Complete if the organization answered 'Yes' to Form 990, Part IV, line 7.

1 Purpose(s) of conservation easements held by the organization (check all that apply).

<input type="checkbox"/> Preservation of land for public use (e.g., recreation or education)	<input type="checkbox"/> Preservation of an historically important land area
<input type="checkbox"/> Protection of natural habitat	<input type="checkbox"/> Preservation of a certified historic structure
<input type="checkbox"/> Preservation of open space	

2 Complete lines 2a through 2d if the organization held a qualified conservation contribution in the form of a conservation easement on the last day of the tax year.

	Held at the End of the Tax Year
a Total number of conservation easements	2 a
b Total acreage restricted by conservation easements	2 b
c Number of conservation easements on a certified historic structure included in (a)	2 c
d Number of conservation easements included in (c) acquired after 8/17/06, and not on a historic structure listed in the National Register	2 d

3 Number of conservation easements modified, transferred, released, extinguished, or terminated by the organization during the tax year ▶ _____

4 Number of states where property subject to conservation easement is located ▶ _____

5 Does the organization have a written policy regarding the periodic monitoring, inspection, handling of violations, and enforcement of the conservation easements it holds?

Yes No

6 Staff and volunteer hours devoted to monitoring, inspecting, and enforcing conservation easements during the year ▶ _____

7 Amount of expenses incurred in monitoring, inspecting, and enforcing conservation easements during the year ▶ \$ _____

8 Does each conservation easement reported on line 2(d) above satisfy the requirements of section 170(h)(4)(B)(i) and section 170(h)(4)(B)(ii)?

Yes No

9 In Part XIII, describe how the organization reports conservation easements in its revenue and expense statement, and balance sheet, and include, if applicable, the text of the footnote to the organization's financial statements that describes the organization's accounting for conservation easements.

Part III Organizations Maintaining Collections of Art, Historical Treasures, or Other Similar Assets. Complete if the organization answered 'Yes' to Form 990, Part IV, line 8.

1 a If the organization elected, as permitted under SFAS 116 (ASC 958), not to report in its revenue statement and balance sheet works of art, historical treasures, or other similar assets held for public exhibition, education, or research in furtherance of public service, provide, in Part XIII, the text of the footnote to its financial statements that describes these items.

b If the organization elected, as permitted under SFAS 116 (ASC 958), to report in its revenue statement and balance sheet works of art, historical treasures, or other similar assets held for public exhibition, education, or research in furtherance of public service, provide the following amounts relating to these items:

(i) Revenues included in Form 990, Part VIII, line 1

▶ \$ _____

(ii) Assets included in Form 990, Part X

▶ \$ _____

2 If the organization received or held works of art, historical treasures, or other similar assets for financial gain, provide the following amounts required to be reported under SFAS 116 (ASC 958) relating to these items:

a Revenues included in Form 990, Part VIII, line 1

▶ \$ _____

b Assets included in Form 990, Part X

▶ \$ _____

Part III Organizations Maintaining Collections of Art, Historical Treasures, or Other Similar Assets (continued)

3 Using the organization's acquisition, accession, and other records, check any of the following that are a significant use of its collection items (check all that apply):

- a Public exhibition
- b Scholarly research
- c Preservation for future generations
- d Loan or exchange programs
- e Other _____

4 Provide a description of the organization's collections and explain how they further the organization's exempt purpose in Part XIII.

5 During the year, did the organization solicit or receive donations of art, historical treasures, or other similar assets to be sold to raise funds rather than to be maintained as part of the organization's collection? Yes No

Part IV Escrow and Custodial Arrangements. Complete if the organization answered 'Yes' to Form 990, Part IV, line 9, or reported an amount on Form 990, Part X, line 21.

1 a Is the organization an agent, trustee, custodian, or other intermediary for contributions or other assets not included on Form 990, Part X? Yes No

b If 'Yes,' explain the arrangement in Part XIII and complete the following table:

	Amount
c Beginning balance	1 c
d Additions during the year	1 d
e Distributions during the year	1 e
f Ending balance	1 f

2 a Did the organization include an amount on Form 990, Part X, line 21? Yes No

b If 'Yes,' explain the arrangement in Part XIII. Check here if the explanation has been provided in Part XIII

Part V Endowment Funds. Complete if the organization answered 'Yes' to Form 990, Part IV, line 10.

	(a) Current	(b) Prior year	(c) Two years	(d) Three years	(e) Four years
1 a Beginning of year balance					
b Contributions					
c Net investment earnings, gains, and losses					
d Grants or scholarships					
e Other expenditures for facilities and programs					
f Administrative expenses					
g End of year balance					

2 Provide the estimated percentage of the current year end balance (line 1g, column (a)) held as:

- a Board designated or quasi-endowment %
- b Permanent endowment %
- c Temporarily restricted endowment %

The percentages in lines 2a, 2b, and 2c should equal 100%.

3 a Are there endowment funds not in the possession of the organization that are held and administered for the organization by:

	Yes	No
(i) unrelated organizations	3a(i)	
(ii) related organizations	3a(ii)	
b If 'Yes' to 3a(ii), are the related organizations listed as required on Schedule R?	3b	

4 Describe in Part XIII the intended uses of the organization's endowment funds.

Part VI Land, Buildings, and Equipment. See Form 990, Part X, line 10.

Description of property	(a) Cost or other basis (investment)	(b) Cost or other basis (other)	(c) Accumulated depreciation	(d) Book value
1 a Land		385,174.		385,174.
b Buildings		1,477,675.	688,383.	789,292.
c Leasehold improvements				
d Equipment		1,095,488.	880,092.	215,396.
e Other				
Total. Add lines 1a through 1e. (Column (d) must equal Form 990, Part X, column (B), line 10(c).)				1,389,862.

BAA

Part VII Investments – Other Securities. See Form 990, Part X, line 12.

(a) Description of security or category (Including name of security)	(b) Book value	(c) Method of valuation: Cost or end-of-year market value
(1) Financial derivatives		
(2) Closely-held equity interests		
(3) Other		
(A)		
(B)		
(C)		
(D)		
(E)		
(F)		
(G)		
(H)		
(I)		
Total. (Column (b) must equal Form 990, Part X, column (B) line 12.) ... ▶		

Part VIII Investments – Program Related. See Form 990, Part X, line 13.

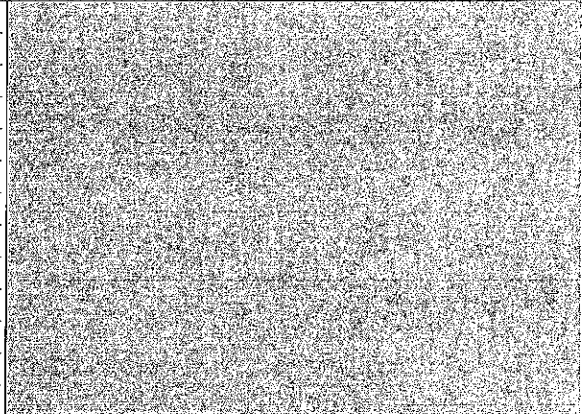
(a) Description of investment type	(b) Book value	(c) Method of valuation: Cost or end-of-year market value
(1)		
(2)		
(3)		
(4)		
(5)		
(6)		
(7)		
(8)		
(9)		
(10)		
Total. (Column (b) must equal Form 990, Part X, column (B) line 13.) ... ▶		

Part IX Other Assets. See Form 990, Part X, line 15.

(a) Description	(b) Book value
(1)	
(2)	
(3)	
(4)	
(5)	
(6)	
(7)	
(8)	
(9)	
(10)	
Total. (Column (b) must equal Form 990, Part X, column (B), line 15.) ... ▶	

Part X Other Liabilities. See Form 990, Part X, line 25.

(a) Description of liability	(b) Book value
(1) Federal income taxes	
(2) Salaries and Compensated Absences Payable	250,783.
(3)	
(4)	
(5)	
(6)	
(7)	
(8)	
(9)	
(10)	
(11)	
Total. (Column (b) must equal Form 990, Part X, column (B) line 25.) ... ▶	250,783.



2. FIN 48 (ASC 740) Footnote. In Part XIII, provide the text of the footnote to the organization's financial statements that reports the organization's liability for uncertain tax positions under FIN 48 (ASC 740). Check here if the text of the footnote has been provided in Part XIII

Part XI Reconciliation of Revenue per Audited Financial Statements With Revenue per Return

1	Total revenue, gains, and other support per audited financial statements		1
2	Amounts included on line 1 but not on Form 990, Part VIII, line 12:		
	a Net unrealized gains on investments	2 a	
	b Donated services and use of facilities	2 b	
	c Recoveries of prior year grants	2 c	
	d Other (Describe in Part XIII.)	2 d	
	e Add lines 2a through 2d		2 e
3	Subtract line 2e from line 1		3
4	Amounts included on Form 990, Part VIII, line 12, but not on line 1:		
	a Investment expenses not included on Form 990, Part VIII, line 7b	4 a	
	b Other (Describe in Part XIII.)	4 b	
	c Add lines 4a and 4b		4 c
5	Total revenue. Add lines 3 and 4c. (This must equal Form 990, Part I, line 12.)		5

Part XII Reconciliation of Expenses per Audited Financial Statements With Expenses per Return

1	Total expenses and losses per audited financial statements		1
2	Amounts included on line 1 but not on Form 990, Part IX, line 25:		
	a Donated services and use of facilities	2 a	
	b Prior year adjustments	2 b	
	c Other losses	2 c	
	d Other (Describe in Part XIII.)	2 d	
	e Add lines 2a through 2d		2 e
3	Subtract line 2e from line 1		3
4	Amounts included on Form 990, Part IX, line 25, but not on line 1:		
	a Investment expenses not included on Form 990, Part VIII, line 7b	4 a	
	b Other (Describe in Part XIII.)	4 b	
	c Add lines 4a and 4b		4 c
5	Total expenses. Add lines 3 and 4c. (This must equal Form 990, Part I, line 18.)		5

Part XIII Supplemental Information

Complete this part to provide the descriptions required for Part II, lines 3, 5, and 9; Part III, lines 1a and 4; Part IV, lines 1b and 2b; Part V, line 4; Part X, line 2; Part XI, lines 2d and 4b; and Part XII, lines 2d and 4b. Also complete this part to provide any additional information.

Pt IV Line 2b The Agency is the custodian for the Courtyard Apartments, Social Security Payees, Mutual Self Help Families Fiduciary Construction Accounts, and amounts to be returned to various granting Agencies.

Pt X Line 2 Provisions for income taxes have not been recorded in the 2011 financial statements because the Agency believes it had no taxable net income unrelated to its exempt purposes in 2012. With few exceptions, the Agency is no longer subject to U.S.

Part XIII Supplemental Information *(continued)*

federal or state tax examinations by tax authorities for years before 2009.

SCHEDULE I
(Form 990)

Department of the Treasury
Internal Revenue Service

**Grants and Other Assistance to Organizations,
Governments, and Individuals in the United States**

Complete if the organization answered 'Yes' to Form 990, Part IV, line 21 or 22.
▶ Attach to Form 990.

OMB No. 1545-0047

2012

Open to Public Inspection

Name of the organization

Northwest Montana Human Resources, Inc.

Part I General Information on Grants and Assistance

Employer identification number

81-0366018

- 1** Does the organization maintain records to substantiate the amount of the grants or assistance, the grantees' eligibility for the grants or assistance, and the selection criteria used to award the grants or assistance? Yes No
- 2** Describe in Part IV the organization's procedures for monitoring the use of grant funds in the United States.

Part II Grants and Other Assistance to Governments and Organizations in the United States. Complete if the organization answered 'Yes' to Form 990, Part IV, line 21 for any recipient that received more than \$5,000. Part II can be duplicated if additional space is needed.

1 (a) Name and address of organization or government	(b) EIN	(c) IRC section if applicable	(d) Amount of cash grant	(e) Amount of non-cash assistance	(f) Method of valuation (book, FMV, appraisal, other)	(g) Description of non-cash assistance	(h) Purpose of grant or assistance
(1) Samaritan House P.O. Box 592 Kalispell MT 59901	81-0466186	501 (c) (3)	10,084.				Homeless Preve
(2) Other < 5,000 n/a Kalispell MT 59901	n/a	501 (c) (3)	27,615.				Operating Supp
(3) -----							
(4) -----							
(5) -----							
(6) -----							
(7) -----							
(8) -----							

2 Enter total number of section 501(c)(3) and government organizations listed in the line 1 table 13

3 Enter total number of other organizations listed in the line 1 table 0

BAA For Paperwork Reduction Act Notice, see the Instructions for Form 990.

TEEA3901 11/30/12

Schedule I (Form 990) (2012)

SCHEDULE O
(Form 990 or 990-EZ)

Supplemental Information to Form 990 or 990-EZ

OMB No. 1545-0047

2012

Open to Public
Inspection

Department of the Treasury
Internal Revenue Service

Complete to provide information for responses to specific questions on
Form 990 or 990-EZ or to provide any additional information.

▶ Attach to Form 990 or 990-EZ.

Name of the organization

Northwest Montana Human Resources, Inc.

Employer identification number

81-0366018

Pt VI, Line 11b The Agency utilizes its Finance Committee for an in depth review
of its Form 990. Fiscal staff presents the Form 990
and is available for questions from the Finance Committee.
When the Finance Committee has approved the Form 990, it is presented
to the rest of the Board of Directors for their approval
and is documented in the board minutes.

Pt VI, Line 19 The Agency provides copies of its governing documents,
conflict of interest policy and financial statements to
anyone who requests them within 48 hours of the request.
The Agency also provides a copy of its Form 990 on its website for anyone
to read or download.

Pt VI, Line 12c The Agency annually has the Directors review vendors and
subcontractors used by the organization to indicate if any
Director has a conflict of interest. If so, it is identified
and documented. All Directors re-sign a Conflict of Interest
statement. Directors are reminded of the board policies
regarding conflicts of interest.

Pt VI, Line 15a The Personnel Committee of the Board of Directors is responsible
for determining the compensation of the Executive Director.
This committee utilizes surveys of comparable salaries for
ED's in comparable organizations with approximately the same size of
staff and spending in a location of similar size. The
committee documents this information and their decision
on the appropriate compensation to offer to the ED. The full
board then approves or disapproves their recommendation.

Pt III Line 4d Job Training Expenses 1,069,896. Grants 0. Revenues 3,136.

Name of the organization

Northwest Montana Human Resources, Inc.

Employer identification number

81-0366018

Job Training Programs provide the following: Workforce Investment Act (WIA) served 32 Youth who were unemployed, underemployed or still in school. Services include job assessment, vocational training, job training, job search assistance, work experience and limited internships. State Displaced Homemaker provided services to 12 people who had previously been providing unpaid services to family members in the home and have been dependent on the income of another family member. Individually designed programs stress self-image enhancement career assessment, on-the-job training and job search assistance. Work Readiness Component (WoRC) of public assistance is designed to promote employment and self-sufficiency to participants referred from the Office of Public Assistance. 821 participants received intensive individual case management which included job search skills, job readiness training, work experience and a series of classes designed to address barriers to employment. TANF subsidized Employment Program (SEP) provided 30 individuals the opportunity to complete customized training and employment experiences to increase marketable job skills. The customized training is designed to increase occupational skills in a field in which the participant does not possess the skills necessary to perform the job. Summer Youth Employment provided 23 youth a 4 to 8 week paid (equal or greater than minimum wage) supervised work experience. Of the clients enrolled in the above-mentioned programs, 657 obtained skills/competencies required for employment, 12 received their GED or high school diploma, 20 completed post secondary education and obtained a certificate or diploma, 241 obtained a job, 250 obtained child care so that they could work, seek work or go to school and 8 secured safe and affordable housing.

Pt III, Line 4d Community Service Expenses 479,318. Grants 4,000. Revenue 15,094.

Community Service Programs provide the following: Free to Choose is specifically designed to empower people to take charge of their economic

Name of the organization

Northwest Montana Human Resources, Inc.

Employer identification number

81-0366018

future. The program has 3 critical components; education, support, and access to credit. 65 individuals were enrolled in this program. Volunteer Income Tax Assistance (VITA) provided free income tax preparation for 461 low and moderate income individuals who received over \$440,000 in state and federal refunds. Community Services Block Grant (CSBG) is the funding that links all agency programs and provides support for programs that are not self-sustaining on their own. The Agency is part of the Community Action Partnership network that receives this funding. Its efforts are focused on community partnerships that promote individual, family and community self-sufficiency. The ARRA Homeless Prevention, Rapid Re-Housing Program served 93 clients by either preventing individuals or families from becoming homeless or by helping those who are experiencing homelessness to be quickly re-housed and stabilized. 151 low-income people were assisted with free legal assistance through CAPNM's partnership with Montana Legal Services Association. Family law and bankruptcy clinics were held to assist families and individuals access their options and if needed to file the needed paperwork to complete these legal activities. Project Homeless Connect partnered with the local community to serve 635 individuals in 2 days in June. Over 30 agencies provided services such as the following: teeth cleaning and minor tooth repair, optical appointments and eyeglasses, medical assessment and appointments for follow-up care, applications for birth certificates, IDs and drivers licenses, gas vouchers, mental health referrals, legal referrals, etc. During the year, CAPNM made over 26,000 referrals to other non-profits/services in our four county service area. Volunteers contributed over 12,600 hours to the Agency in 2012.

SCHEDULE R
(Form 990)

Department of the Treasury
Internal Revenue Service

OMB No. 1545-0047

2012

▶ Complete if the organization answered 'Yes' to Form 990, Part IV, line 33, 34, 35, 36, or 37.
▶ Attach to Form 990. ▶ See separate instructions.



Name of the organization

Employer identification number

Northwest Montana Human Resources, Inc.

81-0366018

Part I Identification of Disregarded Entities (Complete if the organization answered 'Yes' to Form 990, Part IV, line 33.)

(a) Name, address, and EIN (if applicable) of disregarded entity	(b) Primary activity	(c) Legal domicile (state or foreign country)	(d) Total income	(e) End-of-year assets	(f) Direct controlling entity
(1) -----					

(2) -----					

(3) -----					

Part II Identification of Related Tax-Exempt Organizations (Complete if the organization answered 'Yes' to Form 990, Part IV, line 34 because it had one or more related tax-exempt organizations during the tax year.)

(a) Name, address, and EIN of related organization	(b) Primary activity	(c) Legal domicile (state or foreign country)	(d) Exempt Code section	(e) Public charity status (if section 501(c)(3))	(f) Direct controlling entity	(g) Sec 512(b)(13) controlled entity?	
						Yes	No
(1) Valley View Apartments Corporation P.O. Box 8300 Kalispell, MT 59904 81-0510080	LOW INCOME HOUSING TAX CREDIT PARTNER MT		501 (c) (3)	9	N/A		X
(2) Columbia Villa Apartments Corporation P.O. Box 8300 Kalispell, MT 59904 81-0510082	LOW INCOME HOUSING TAX CREDIT PARTNER MT		501 (c) (3)	9	N/A		X
(3) Green Meadow Manor Corporation P.O. Box 8300 Kalispell, MT 59904 81-0510078	LOW INCOME HOUSING TAX CREDIT PARTNER MT		501 (c) (3)	9	N/A		X
(4) See Cont. Sheet for Sch. R, Part II -----							

Part III Identification of Related Organizations Taxable as a Partnership (Complete if the organization answered 'Yes' to Form 990, Part IV, line 34 because it had one or more related organizations treated as a partnership during the tax year.)

(a) Name, address, and EIN of related organization	(b) Primary activity	(c) Legal domicile (state or foreign country)	(d) Direct controlling entity	(e) Predominant income (related, unrelated, excluded from tax under sections 512-514)	(f) Share of total income	(g) Share of end-of-year assets	(h) Disproportionate allocations?		(i) Code V-UBI amount in box 20 of Schedule K-1 (Form 1065)	(j) General or managing partner?		(k) Percentage ownership
							Yes	No		Yes	No	
(1) -----												

(2) -----												

(3) -----												

Part IV Identification of Related Organizations Taxable as a Corporation or Trust (Complete if the organization answered 'Yes' to Form 990, Part IV, line 34 because it had one or more related organizations treated as a corporation or trust during the tax year.)

(a) Name, address, and EIN of related organization	(b) Primary activity	(c) Legal domicile (state or foreign country)	(d) Direct controlling entity	(e) Type of entity (C corp, S corp, or trust)	(f) Share of total income	(g) Share of end-of-year assets	(h) Percentage ownership	(i) Sec 512(b)(13) controlled entity?	
								Yes	No
(1) -----									

(2) -----									

(3) -----									

Part V Transactions With Related Organizations (Complete if the organization answered 'Yes' to Form 990, Part IV, line 34, 35b, or 36.)

Note. Complete line 1 if any entity is listed in Parts II, III, or IV of this schedule.

1 During the tax year, did the organization engage in any of the following transactions with one or more related organizations listed in Parts II-IV?

	Yes	No
a Receipt of (i) interest (ii) annuities (iii) royalties or (iv) rent from a controlled entity		X
b Gift, grant, or capital contribution to related organization(s)		X
c Gift, grant, or capital contribution from related organization(s)		X
d Loans or loan guarantees to or for related organization(s)		X
e Loans or loan guarantees by related organization(s)		X
f Dividends from related organization(s)		X
g Sale of assets to related organization(s)		X
h Purchase of assets from related organization(s)		X
i Exchange of assets with related organization(s)		X
j Lease of facilities, equipment, or other assets to related organization(s)		X
k Lease of facilities, equipment, or other assets from related organization(s)		X
l Performance of services or membership or fundraising solicitations for related organization(s)		X
m Performance of services or membership or fundraising solicitations by related organization(s)		X
n Sharing of facilities, equipment, mailing lists, or other assets with related organization(s)		X
o Sharing of paid employees with related organization(s)		X
p Reimbursement paid to related organization(s) for expenses		X
q Reimbursement paid by related organization(s) for expenses		X
r Other transfer of cash or property to related organization(s)		X
s Other transfer of cash or property from related organization(s)		X

2 If the answer to any of the above is 'Yes,' see the instructions for information on who must complete this line, including covered relationships and transaction thresholds.

(1) NONE	(a) Name of other organization	(b) Transaction type (a-s)	(c) Amount involved	(d) Method of determining amount involved
		A-R		NONE
(2)	NORTHWEST MONTANA COMMUNITY LAND TRUST	S	1,028,217.FMV	
(3)				
(4)				
(5)				
(6)				

Part VI Unrelated Organizations Taxable as a Partnership (Complete if the organization answered 'Yes' to Form 990, Part IV, line 37.)

Provide the following information for each entity taxed as a partnership through which the organization conducted more than five percent of its activities (measured by total assets or gross revenue) that was not a related organization. See instructions regarding exclusion for certain investment partnerships.

(a) Name, address, and EIN of entity	(b) Primary activity	(c) Legal domicile (state or foreign country)	(d) Predominant income (related, unrelated, excluded from tax under section 512-514)	(e) Are all partners section 501(c)(3) organizations?		(f) Share of total income	(g) Share of end-of-year assets	(h) Disproportionate allocations?		(i) Code V-UBI amount in box 20 of Schedule K-1 Form (1065)	(j) General or managing partner?		(k) Percentage ownership
				Yes	No			Yes	No		Yes	No	
(1) -----													

(2) -----													

(3) -----													

(4) -----													

(5) -----													

(6) -----													

(7) -----													

(8) -----													

Part VI Supplemental Information

Complete this part to provide additional information for responses to questions on Schedule R (see instructions).

PART V, LINE 2 THE AGENCY FORMED AND GRANTED TO THE NORTHWEST MONTANA
 COMMUNITY LAND TRUST (A NON-PROFIT CORPORATION) LAND AND HOMES
 AS PART OF THE NEIGHBORHOOD STABILIZATION PROJECT.
 THE HOMES WILL BE SOLD TO INCOME ELIGIBLE INDIVIDUALS
 WITH THE PROCEEDS TO BE RETURNED TO THE AGENCY FOR
 PURCHASING FURTHER DISTRESSED HOMES IN THE AREA FOR
 RESALE TO ECONOMICALLY DISADVANTAGED IN THE COMMUNITY.

Schedule O (Form 990), Supplemental Information to Form 990
Form 990, Page 2, Part III, Line 1 (continued)

Briefly describe the organization's mission:

advocacy to improve lives and strengthen our communities. Our service area encompasses the four counties of northwest Montana. Assisting people to find their way out of poverty is our utmost goal.

Schedule O (Form 990), Supplemental Information to Form 990
Form 990, Page 2, Part III, Line 4c (continued)

in labor enables families to obtain mortgages that are affordable. 149 individuals participated in a First Time Homebuyer Program and/or met for one-on-one pre-purchase counseling. Using NSP 3 funds, 4 repossessed homes were rehabilitated and placed into a Community Land Trust to be sold to low and moderate income families thus preserving the affordability of homes over the foreseeable future. Of the 16 original homes put into the CLT preciously, 10 were sold to moderate income families. 60 homes were purchased by low to moderate families as a result of CAPNM's assistance.

Schedule O (Form 990), Supplemental Information to Form 990
Form 990, Page 2, Part III, Line 4d (continued)

Describe the organization's program service accomplishments for each of its three largest program services, as measured by expenses. Section 501(c)(3) and 501(c)(4) organizations are required to report the amount of grants and allocations to others, the total expenses, and revenue, if any, for each program service reported.

Code: _____	Description: <u>Job Training Programs</u>
Expenses	<u>1,069,896.</u>
Grants Of	<u>0.</u>
Revenue ..	<u>3,136.</u>

Code: _____	Description: <u>Community Service Programs</u>
Expenses	<u>479,318.</u>
Grants Of	<u>4,000.</u>
Revenue ..	<u>15,094.</u>

Exempt Organization Business Income Tax Return (and proxy tax under section 6033(e))

For calendar year 2012 or other tax year beginning _____, 2012, and ending _____, _____

2012

Department of the Treasury
Internal Revenue Service

▶ See separate instructions.

Open to Public Inspection for 501(c)(3) Organizations Only

A <input type="checkbox"/> Check box if address changed B Exempt under section <input checked="" type="checkbox"/> 501(c)(3) <input type="checkbox"/> 408(e) <input type="checkbox"/> 220(e) <input type="checkbox"/> 408A <input type="checkbox"/> 530(a) <input type="checkbox"/> 529(a)	Print or Type	Name of organization (<input type="checkbox"/> Check box if name changed and see instructions.) Northwest Montana Human Resources, Inc.		D Employer identification number (Employees' trust, see instructions.) 81-0366018
		Number, street, and room or suite number. If a P.O. box, see instructions. P.O. Box 8300		
		City or town Kalispell	State ZIP code MT 59904-1300	

C Book value of all assets at end of year: 7,735,647.

F Group exemption number (See instructions.) ▶

G Check organization type: 501(c) corporation 501(c) trust 401(a) trust Other trust

H Describe the organization's primary unrelated business activity.
▶ Leasing part of our basement.

I During the tax year, was the corporation a subsidiary in an affiliated group or a parent-subsidiary controlled group? Yes No
If 'Yes,' enter the name and identifying number of the parent corporation . . . ▶

J The books are in care of ▶ Jane Nolan, Chief Financial Officer Telephone number ▶ (406) 752-6565

Part I Unrelated Trade or Business Income		(A) Income	(B) Expenses	(C) Net
1 a	Gross receipts or sales . . .			
b	Less returns and allowances . . .			
c	Balance ▶			
2	Cost of goods sold (Schedule A, line 7)			
3	Gross profit. Subtract line 2 from line 1c			
4 a	Capital gain net income (attach Schedule D)			
b	Net gain (loss) (Form 4797, Part II, line 17) (attach Form 4797)			
c	Capital loss deduction for trusts			
5	Income (loss) from partnerships and S corporations (attach statement)			
6	Rent income (Schedule C)			
7	Unrelated debt-financed income (Schedule E)	16,824.	16,644.	180.
8	Interest, annuities, royalties, and rents from controlled organizations (Schedule F)			
9	Investment income of a section 501(c)(7), (9), or (17) organization (Sch G)			
10	Exploited exempt activity income (Schedule I)			
11	Advertising income (Schedule J)			
12	Other income (See instructions; attach statement)			
13	Total. Combine lines 3 through 12	16,824.	16,644.	180.

Part II Deductions Not Taken Elsewhere (see instructions for limitations on deductions.)
(except for contributions, deductions must be directly connected with the unrelated business income)

14	Compensation of officers, directors, and trustees (Schedule K)	14	
15	Salaries and wages	15	
16	Repairs and maintenance	16	
17	Bad debts	17	
18	Interest (attach statement)	18	
19	Taxes and licenses	19	
20	Charitable contributions (See instructions for limitation rules)	20	
21	Depreciation (attach Form 4562)	21	
22	Less depreciation claimed on Schedule A and elsewhere on return	22 a	22 b
23	Depletion	23	
24	Contributions to deferred compensation plans	24	
25	Employee benefit programs	25	
26	Excess exempt expenses (Schedule I)	26	
27	Excess readership costs (Schedule J)	27	
28	Other deductions (attach statement)	28	
29	Total deductions. Add lines 14 through 28	29	
30	Unrelated business taxable income before net operating loss deduction. Subtract line 29 from line 13	30	180.
31	Net operating loss deduction (limited to the amount on line 30)	31	
32	Unrelated business taxable income before specific deduction. Subtract line 31 from line 30	32	180.
33	Specific deduction (generally \$1,000, but see line 33 instructions for exceptions.)	33	1,000.
34	Unrelated business taxable income. Subtract line 33 from line 32. If line 33 is greater than line 32, enter the smaller of zero or line 32	34	0.

Part II Tax Computation

35 Organizations Taxable as Corporations. (see instructions for tax computation)
 Controlled group members (sections 1561 and 1563) check here See instructions and:
 a Enter your share of the \$50,000, \$25,000, and \$9,925,000 taxable income brackets (in that order):
 (1) \$ _____ (2) \$ _____ (3) \$ _____
 b Enter organization's share of: (1) Additional 5% tax (not more than \$11,750) \$ _____
 (2) Additional 3% tax (not more than \$100,000) \$ _____
 c Income tax on the amount on line 34 **35 c** 0.

36 Trusts taxable at trust rates. (see instructions for tax computation) Income tax on the amount on line 34 from: Tax rate schedule or Schedule D (Form 1041) **36**

37 Proxy tax. (see instructions) **37**

38 Alternative minimum tax **38**

39 Total. Add lines 37 and 38 to line 35c or 36, whichever applies **39** 0.

Part IV Tax and Payments

40 a Foreign tax credit (corporations attach Form 1118; trusts attach Form 1116) **40 a**

b Other credits (see instructions) **40 b**

c General business credit. Attach Form 3800 (see instructions) **40 c**

d Credit for prior year minimum tax (attach Form 8801 or 8827) **40 d**

e Total credits. Add lines 40a through 40d **40 e**

41 Subtract line 40e from line 39 **41** 0.

42 Other taxes. Check if from: Form 4255 Form 8611 Form 8697 Form 8866
 Other (attach statement) **42**

43 Total tax. Add lines 41 and 42 **43** 0.

44 a Payments: A 2011 overpayment credited to 2012 **44 a**

b 2012 estimated tax payments **44 b**

c Tax deposited with Form 8868 **44 c**

d Foreign organizations: Tax paid or withheld at source (see instructions) **44 d**

e Backup withholding (see instructions) **44 e**

f Credit for small employer health insurance premiums (Attach Form 8941) **44 f**

g Other credits and payments: Form 2439 Form 4136 Other **44 g**

45 Total payments. Add lines 44a through 44g **45**

46 Estimated tax penalty (see instructions). Check if Form 2220 is attached **46**

47 Tax due. If line 45 is less than the total of lines 43 and 46, enter amount owed **47**

48 Overpayment. If line 45 is larger than the total of lines 43 and 46, enter amount overpaid **48** 0.

49 Enter the amount of line 48 you want: **Credited to 2013 estimated tax** **Refunded** **49**

Part V Statements Regarding Certain Activities and Other Information (see instructions)

1 At any time during the 2012 calendar year, did the organization have an interest in or a signature or other authority over a financial account (bank, securities, or other) in a foreign country? If 'Yes', the organization may have to file Form TD F 90-22.1, Report of Foreign Bank and Financial Accounts. If 'Yes', enter the name of the foreign country here **Yes** **No**

2 During the tax year, did the organization receive a distribution from, or was it the grantor of, or transferor to, a foreign trust? ... If 'Yes', see instructions for other forms the organization may have to file. **Yes** **No**

3 Enter the amount of tax-exempt interest received or accrued during the tax year \$ **Yes** **No**

Schedule A -- Cost of Goods Sold. Enter method of inventory valuation

1 Inventory at beginning of year 1	6 Inventory at end of year 6	Yes No
2 Purchases 2	7 Cost of goods sold. Subtract line 6 from line 5. Enter here and in Part I, line 2 7	Yes No
3 Cost of labor 3		
4 a Additional section 263A costs (attach statement) 4 a		
b Other costs (alt. stmt.) 4 b		
5 Total. Add lines 1 through 4b 5		

Sign Here

Under penalties of perjury, I declare that I have examined this return, including accompanying schedules and statements, and to the best of my knowledge and belief, it is true, correct, and complete. Declaration of preparer (other than taxpayer) is based on all information of which preparer has any knowledge.

Signature of officer _____ Date _____ Title _____

May the IRS discuss this return with the preparer shown below (see instructions)? **Yes** **No**

Paid Preparer Use Only

Print/Type preparer's name: LOREN W RANDALL, CPA
 Preparer's signature: _____ Date: _____
 Check if self-employed PTIN: P00237699
 Firm's name: CPR ACCOUNTING PLLP Firm's EIN: 81-0544696
 Firm's address: PO BOX 4325 MISSOULA MT 59806
 Phone no. (406) 728-5539

Schedule C – Rent Income (From Real Property and Personal Property Leased With Real Property) (see instructions)

1 Description of property		
(1)		
(2)		
(3)		
(4)		
2 Rent received or accrued		3(a) Deductions directly connected with the income in columns 2(a) and 2(b) (attach statement)
(a) From personal property (if the percentage of rent for personal property is more than 10% but not more than 50%)	(b) From real and personal property (if the percentage of rent for personal property exceeds 50% or if the rent is based on profit or income)	
(1)		
(2)		
(3)		
(4)		
Total		Total
(c) Total income. Add totals of columns 2(a) and 2(b). Enter here and on page 1, Part I, line 6, column (A) ▶		(b) Total deductions. Enter here and on page 1, Part I, line 6, column (B) ▶

Schedule E – Unrelated Debt-Financed Income (see instructions)

1 Description of debt-financed property		2 Gross income from or allocable to debt-financed property	3 Deductions directly connected with or allocable to debt-financed property	
			(a) Straight line depreciation (attach stmt)	(b) Other deductions (attach statement)
(1)	Main office located at 214 Main Street-1/3 of the	16,824.	5,206.	11,438.
(2)	basement is leased to a for-profit Corp.			
(3)				
(4)				
4 Amount of average acquisition debt on or allocable to debt-financed property (attach statement)	5 Average adjusted basis of or allocable to debt-financed property (attach statement)	6 Column 4 divided by column 5	7 Gross income reportable (column 2 x column 6)	8 Allocable deductions (column 6 x total of columns 3(a) and 3(b))
(1)	99,839.	91,379.	100.0000 %	16,824.
(2)			%	
(3)			%	
(4)			%	
Totals ▶			16,824.	16,644.
Total dividends-received deductions included in column 8 ▶				

Schedule F – Interest, Annuities, Royalties, and Rents From Controlled Organizations (see instructions)

1 Name of controlled organization	2 Employer identification number	Exempt Controlled Organizations			
		3 Net unrelated income (loss) (see instructions)	4 Total of specified payments made	5 Part of column 4 that is included in the controlling organization's gross income	6 Deductions directly connected with income in column 5
(1)					
(2)					
(3)					
(4)					
Nonexempt Controlled Organizations					
7 Taxable Income	8 Net unrelated income (loss) (see instructions)	9 Total of specified payments made	10 Part of column 9 that is included in the controlling organization's gross income	11 Deductions directly connected with income in column 10	
(1)					
(2)					
(3)					
(4)					
Totals ▶			Add columns 5 and 10. Enter here and on page 1, Part I, line 8, column (A).	Add columns 6 and 11. Enter here and on page 1, Part I, line 8, column (B).	

Schedule G – Investment Income of a Section 501(c)(7), (9), or (17) Organization (see instructions)

1 Description of income	2 Amount of income	3 Deductions directly connected (attach statement)	4 Set-asides (attach statement)	5 Total deductions and set-asides (column 3 plus column 4)
(1)				
(2)				
(3)				
(4)				
Enter here and on page 1, Part I, line 9, column (A).				Enter here and on page 1, Part I, line 9, column (B).
Totals				

Schedule I – Exploited Exempt Activity Income, Other Than Advertising Income (see instructions)

1 Description of exploited activity	2 Gross unrelated business income from trade or business	3 Expenses directly connected with production of unrelated business income	4 Net income (loss) from unrelated trade or business (column 2 minus column 3). If a gain, compute columns 5 through 7.	5 Gross income from activity that is not unrelated business income	6 Expenses attributable to column 5	7 Excess exempt expenses (column 6 minus column 5, but not more than column 4).
(1)						
(2)						
(3)						
(4)						
Enter here and on page 1, Part I, line 10, column (A).		Enter here and on page 1, Part I, line 10, column (B).				Enter here and on page 1, Part II, line 26.
Totals						

Schedule J – Advertising Income (See instructions.)

Part I Income From Periodicals Reported on a Consolidated Basis

1 Name of periodical	2 Gross advertising income	3 Direct advertising costs	4 Advertising gain or (loss) (col. 2 minus col. 3). If a gain, compute col. 5 through 7.	5 Circulation income	6 Readership costs	7 Excess readership costs (col. 6 minus col. 5, but not more than col. 4).
(1)						
(2)						
(3)						
(4)						
Totals (carry to Part II, line (5))						

Part II Income From Periodicals Reported on a Separate Basis (For each periodical listed in Part II, fill in columns 2 through 7 on a line-by-line basis.)

1 Name of periodical	2 Gross advertising income	3 Direct advertising costs	4 Advertising gain or (loss) (col. 2 minus col. 3). If a gain, compute cols. 5 through 7.	5 Circulation income	6 Readership costs	7 Excess readership costs (col. 6 minus col. 5, but not more than col. 4).
(1)						
(2)						
(3)						
(4)						
(5) Totals from Part I						
Enter here and on page 1, Part I, line 11, column (A).		Enter here and on page 1, Part I, line 11, column (B).				Enter here and on page 1, Part II, line 27.
Totals, Part II (lines 1-5)						

Schedule K – Compensation of Officers, Directors, and Trustees (see instructions)

1 Name	2 Title	3 Percent of time devoted to business	4 Compensation attributable to unrelated business
		%	
		%	
		%	
		%	
Total. Enter here and on page 1, Part II, line 14			